

ETA: 0800
ETD: 1700

ETA: 1100
ETD: 1600

FINNMARKEN
Pax: 919
138/5,2

AURORA - Pax: 2050
32 272/8,4

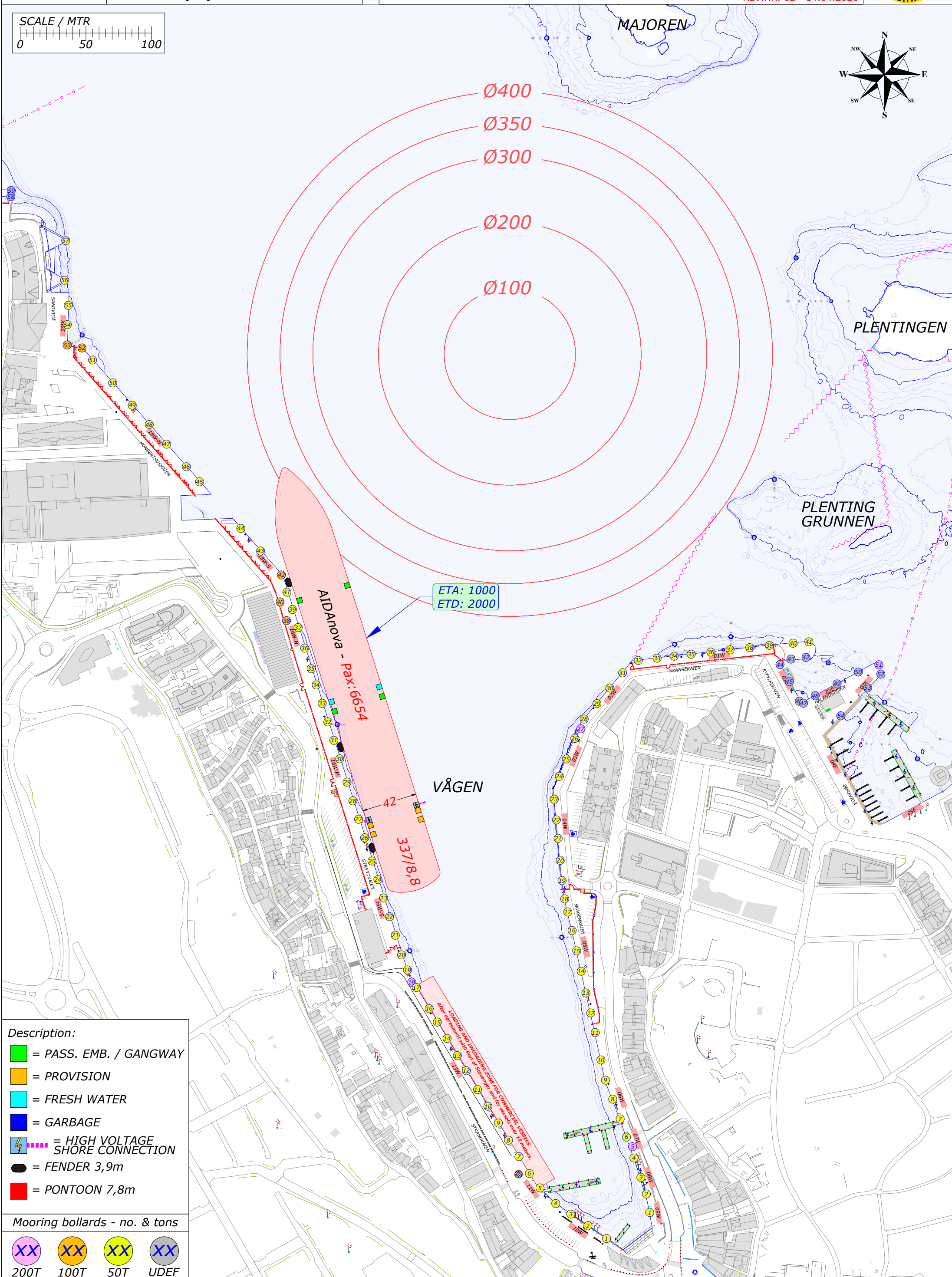
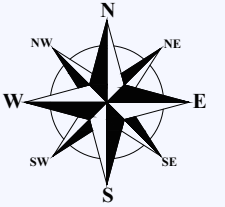
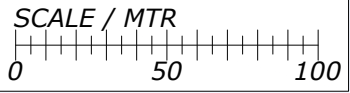
VÅGEN

Description:

- = PASS. EMB. / GANGWAY
- = PROVISION
- = FRESH WATER
- = GARBAGE
- = HIGH VOLTAGE SHORE CONNECTION
- = FENDER 3,9m
- = PONTOON 7,8m

Mooring bollards - no. & tons

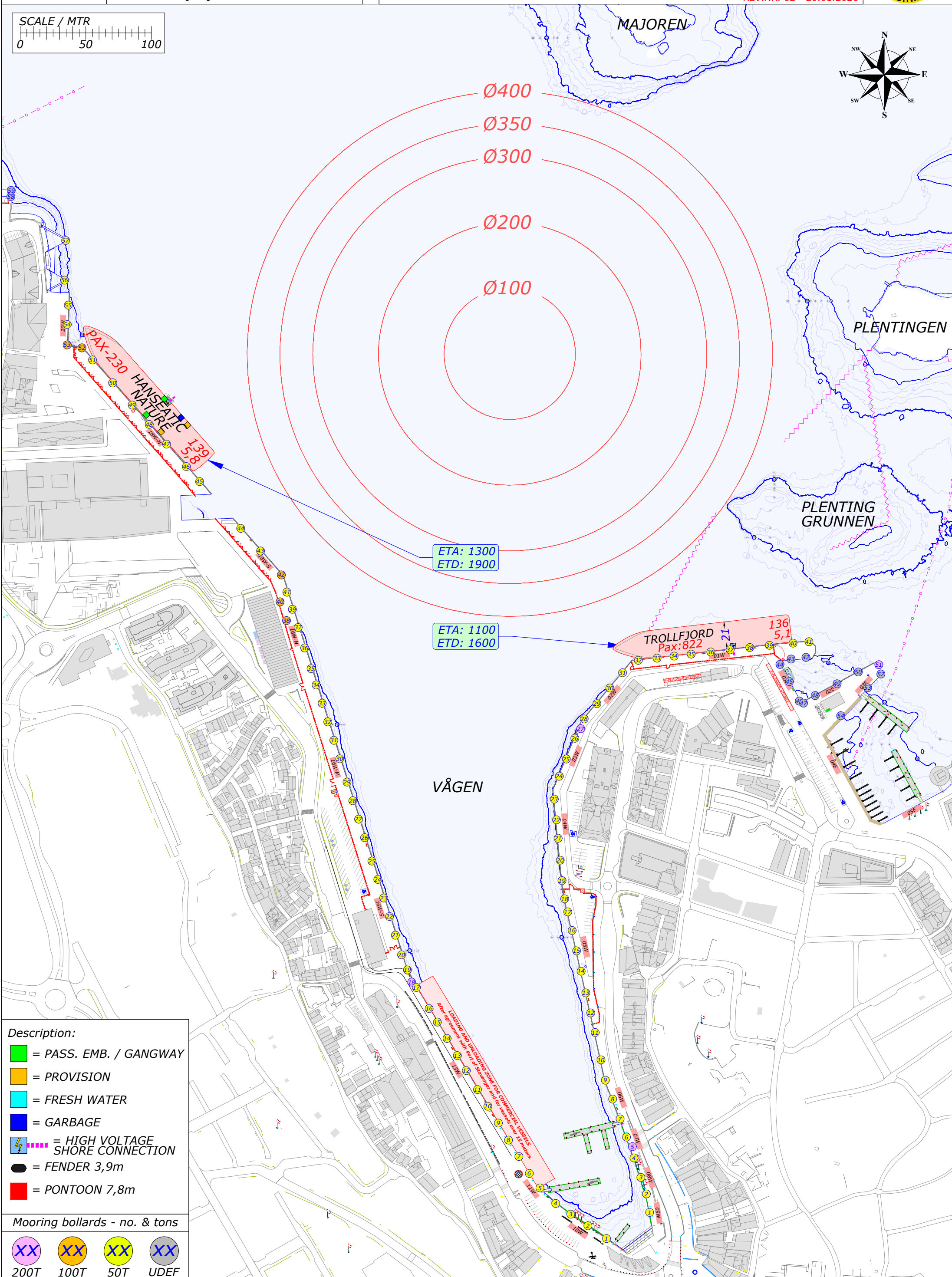
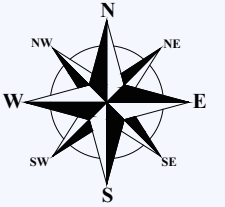
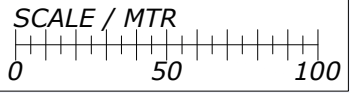
- 200T
- 100T
- 50T
- UDEF



- Description:**
- = PASS. EMB. / GANGWAY
 - = PROVISION
 - = FRESH WATER
 - = GARBAGE
 - ⚡ = HIGH VOLTAGE SHORE CONNECTION
 - = FENDER 3,9m
 - = PONTOON 7,8m

Mooring bollards - no. & tons

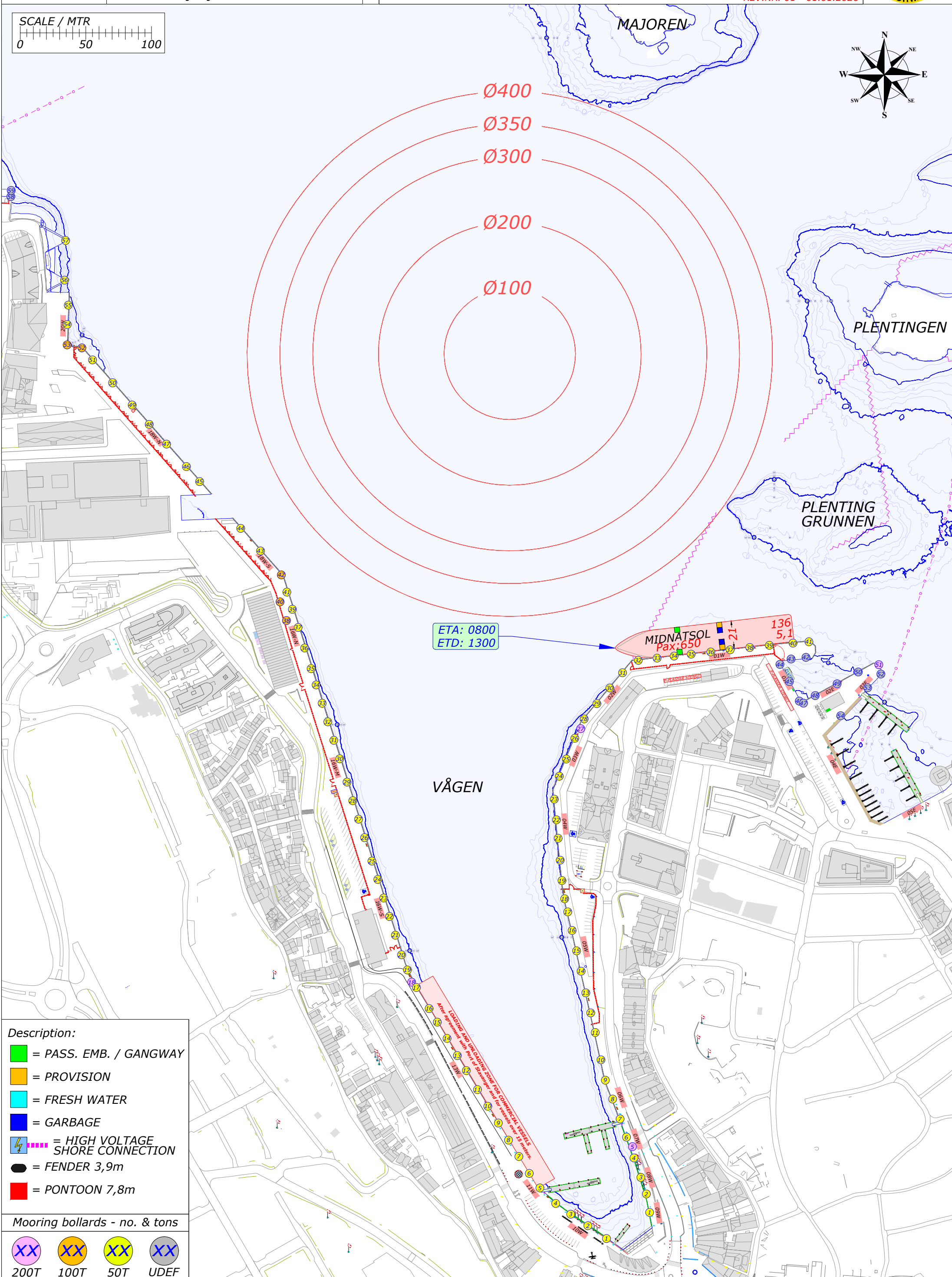
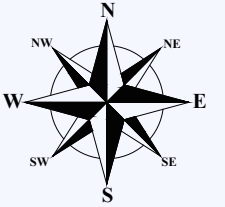
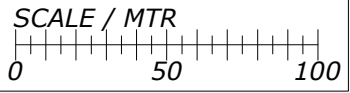
- XX 200T
- XX 100T
- XX 50T
- XX UDEF



- Description:**
- = PASS. EMB. / GANGWAY
 - = PROVISION
 - = FRESH WATER
 - = GARBAGE
 - ⚡ = HIGH VOLTAGE SHORE CONNECTION
 - = FENDER 3,9m
 - = PONTOON 7,8m

Mooring bollards - no. & tons

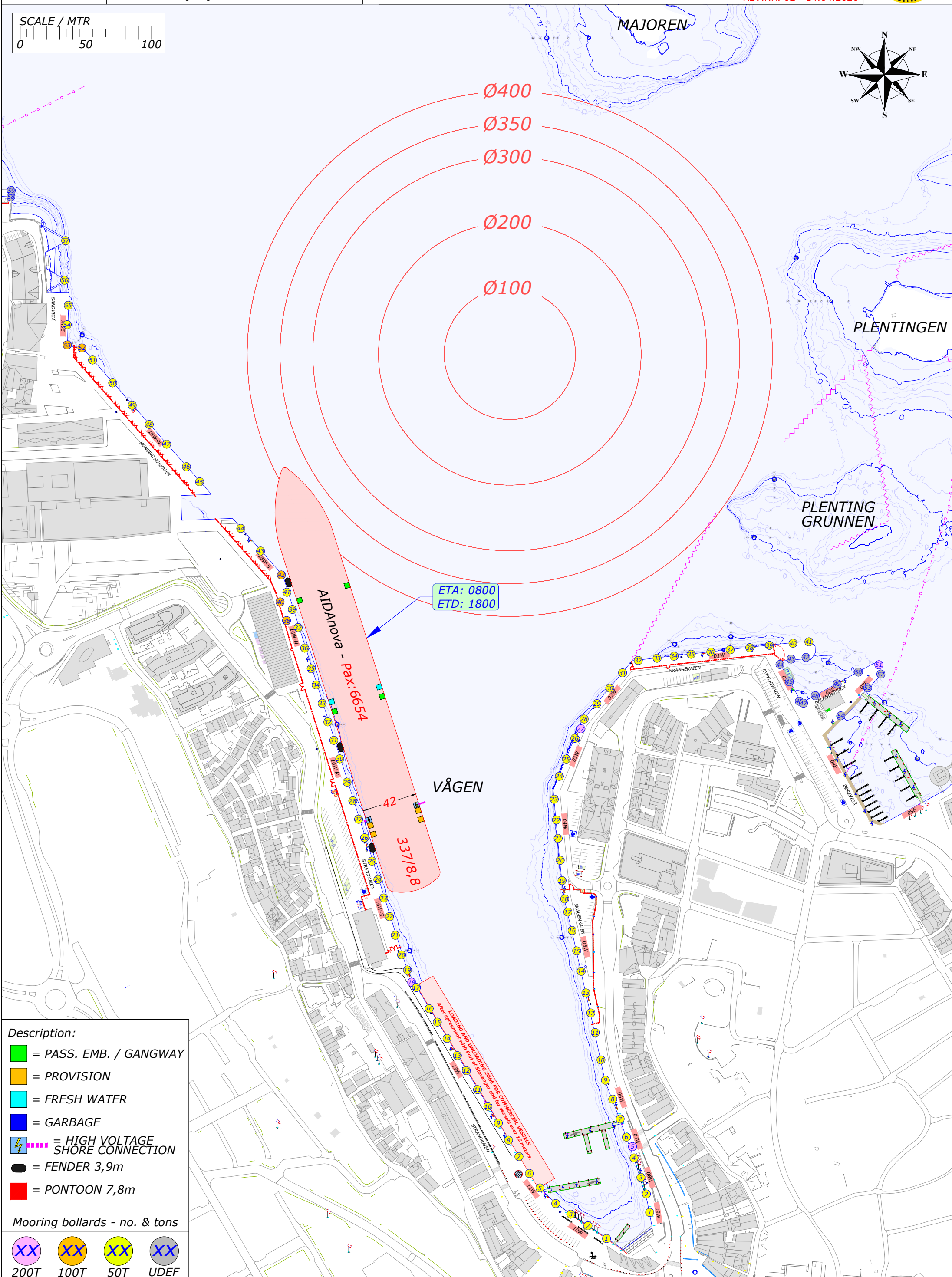
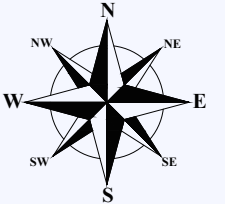
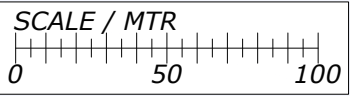
- XX 200T
- XX 100T
- XX 50T
- XX UDEF



- Description:**
- = PASS. EMB. / GANGWAY
 - = PROVISION
 - = FRESH WATER
 - = GARBAGE
 - ⚡ = HIGH VOLTAGE SHORE CONNECTION
 - = FENDER 3,9m
 - = PONTOON 7,8m

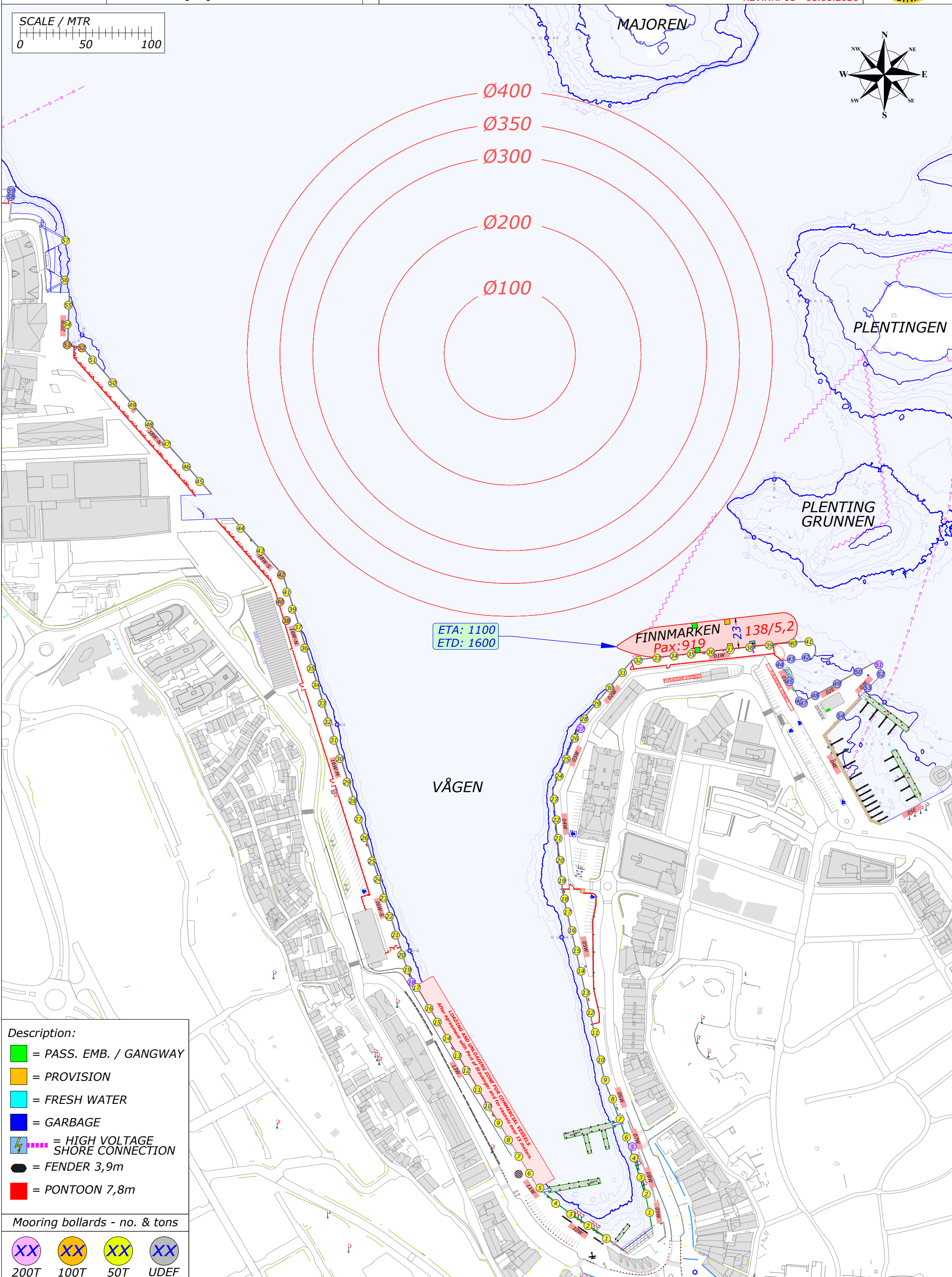
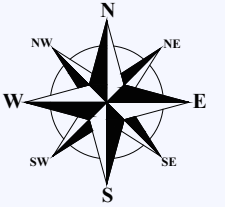
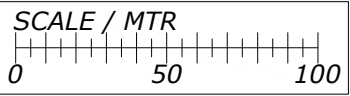
Mooring bollards - no. & tons

- XX 200T
- XX 100T
- XX 50T
- XX UDEF



- Description:**
- = PASS. EMB. / GANGWAY
 - = PROVISION
 - = FRESH WATER
 - = GARBAGE
 - ⚡ = HIGH VOLTAGE SHORE CONNECTION
 - = FENDER 3,9m
 - = PONTOON 7,8m

- Mooring bollards - no. & tons**
- XX 200T
 - XX 100T
 - XX 50T
 - XX UDEF

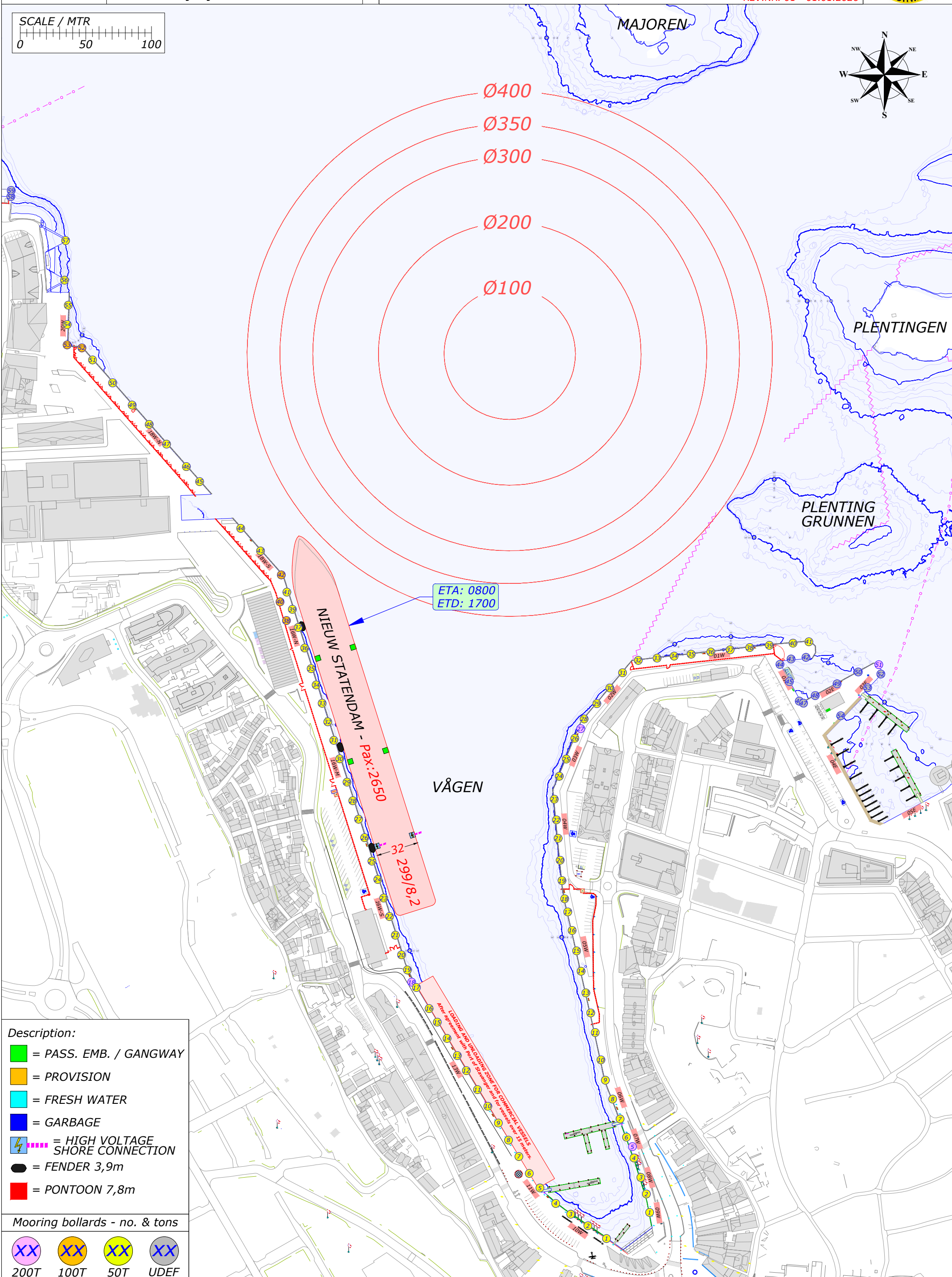
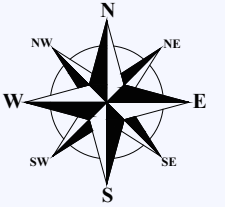
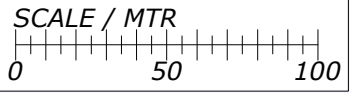


Description:

- = PASS. EMB. / GANGWAY
- = PROVISION
- = FRESH WATER
- = GARBAGE
- ⚡ = HIGH VOLTAGE SHORE CONNECTION
- = FENDER 3,9m
- = PONTOON 7,8m

Mooring bollards - no. & tons

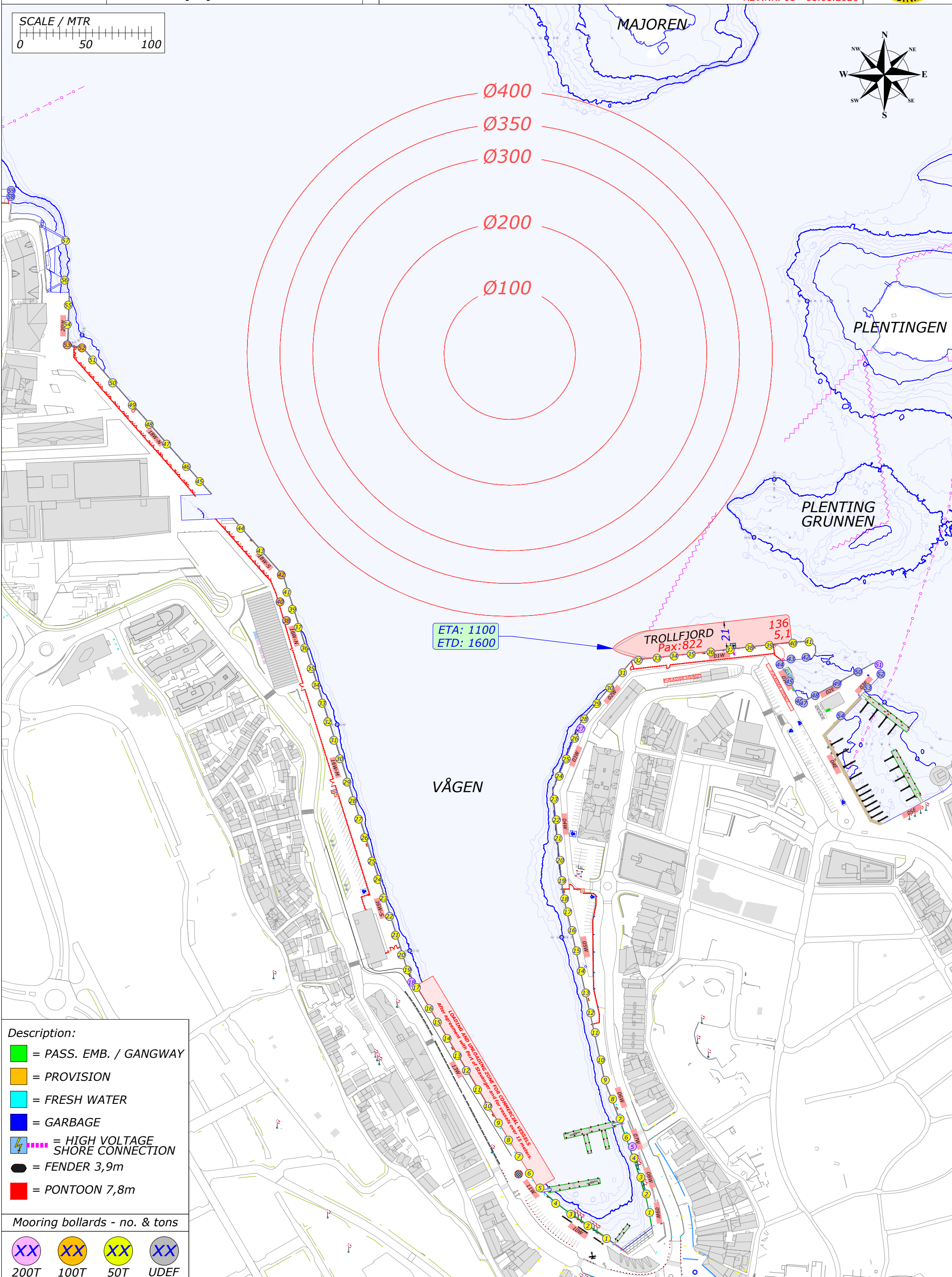
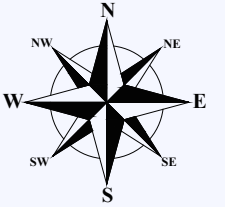
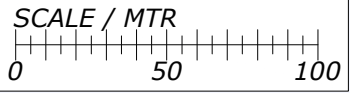
XX 200T
 XX 100T
 XX 50T
 XX UDEF



- Description:**
- = PASS. EMB. / GANGWAY
 - = PROVISION
 - = FRESH WATER
 - = GARBAGE
 - ⚡ = HIGH VOLTAGE SHORE CONNECTION
 - = FENDER 3,9m
 - = PONTOON 7,8m

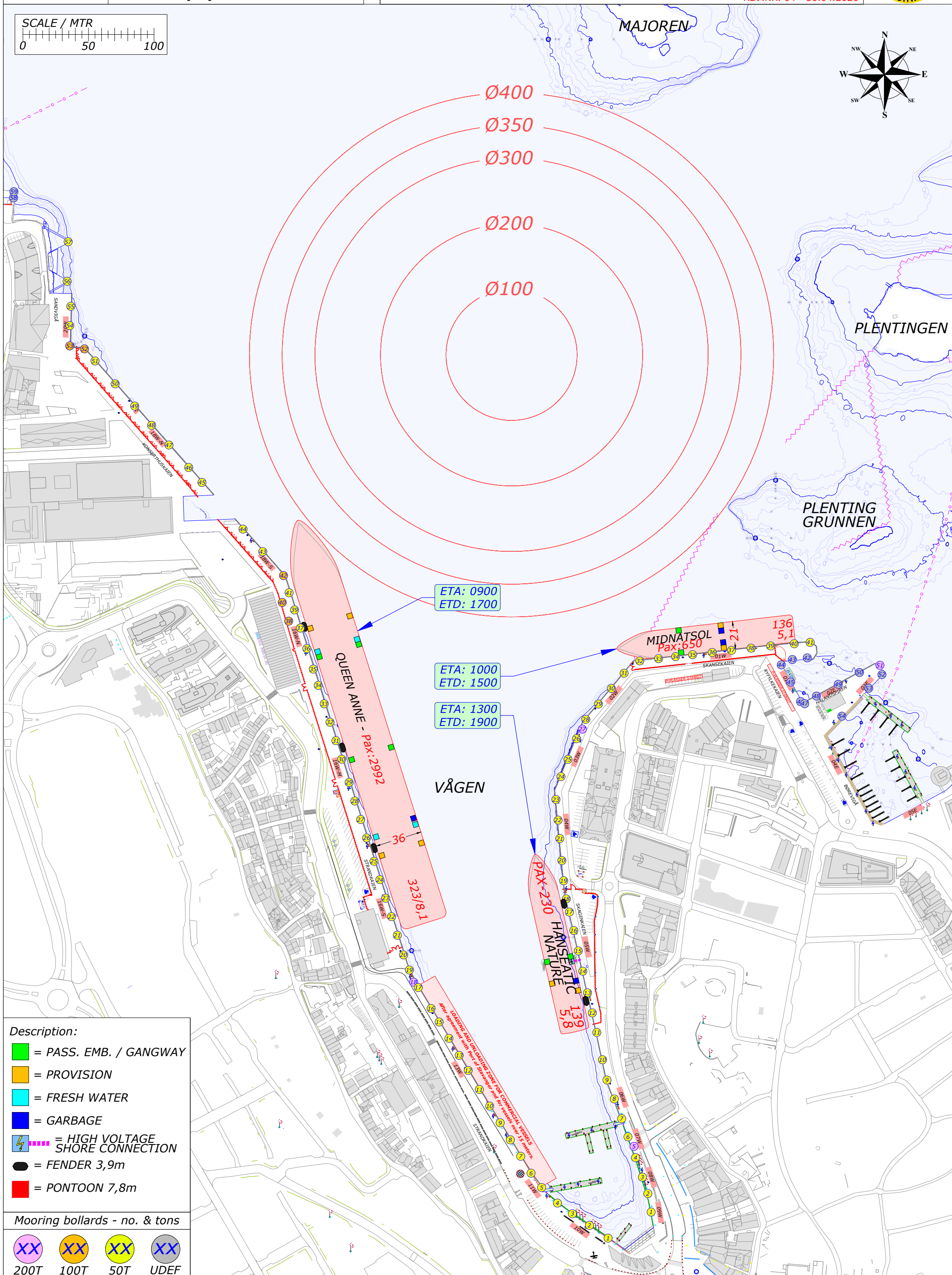
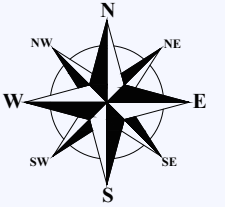
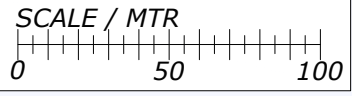
Mooring bollards - no. & tons

- XX 200T
- XX 100T
- XX 50T
- XX UDEF



- Description:**
- = PASS. EMB. / GANGWAY
 - = PROVISION
 - = FRESH WATER
 - = GARBAGE
 - = HIGH VOLTAGE SHORE CONNECTION
 - = FENDER 3,9m
 - = PONTOON 7,8m

- Mooring bollards - no. & tons**
- 200T
 - 100T
 - 50T
 - UDEF



ETA: 0900
ETD: 1700

ETA: 1000
ETD: 1500

ETA: 1300
ETD: 1900

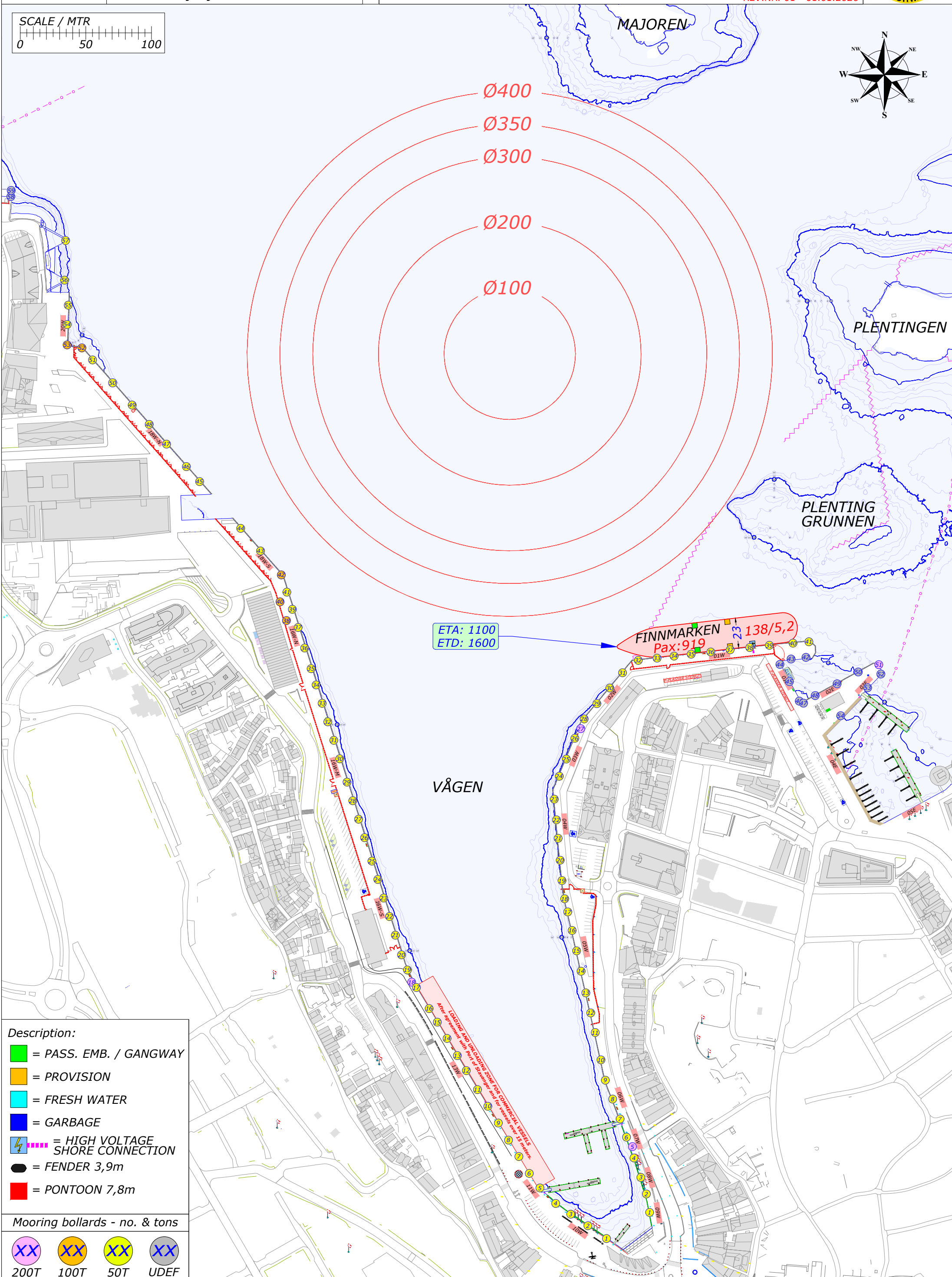
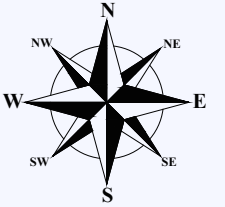
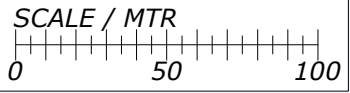
- Description:**
- = PASS. EMB. / GANGWAY
 - = PROVISION
 - = FRESH WATER
 - = GARBAGE
 - ⚡ = HIGH VOLTAGE SHORE CONNECTION
 - = FENDER 3,9m
 - = PONTOON 7,8m

- Mooring bollards - no. & tons**
- XX 200T
 - XX 100T
 - XX 50T
 - XX UDEF

QUEEN ANNE - Pax: 2992
36
323/8,1

MIDNATSOL
Pax: 650
21
136
5,1

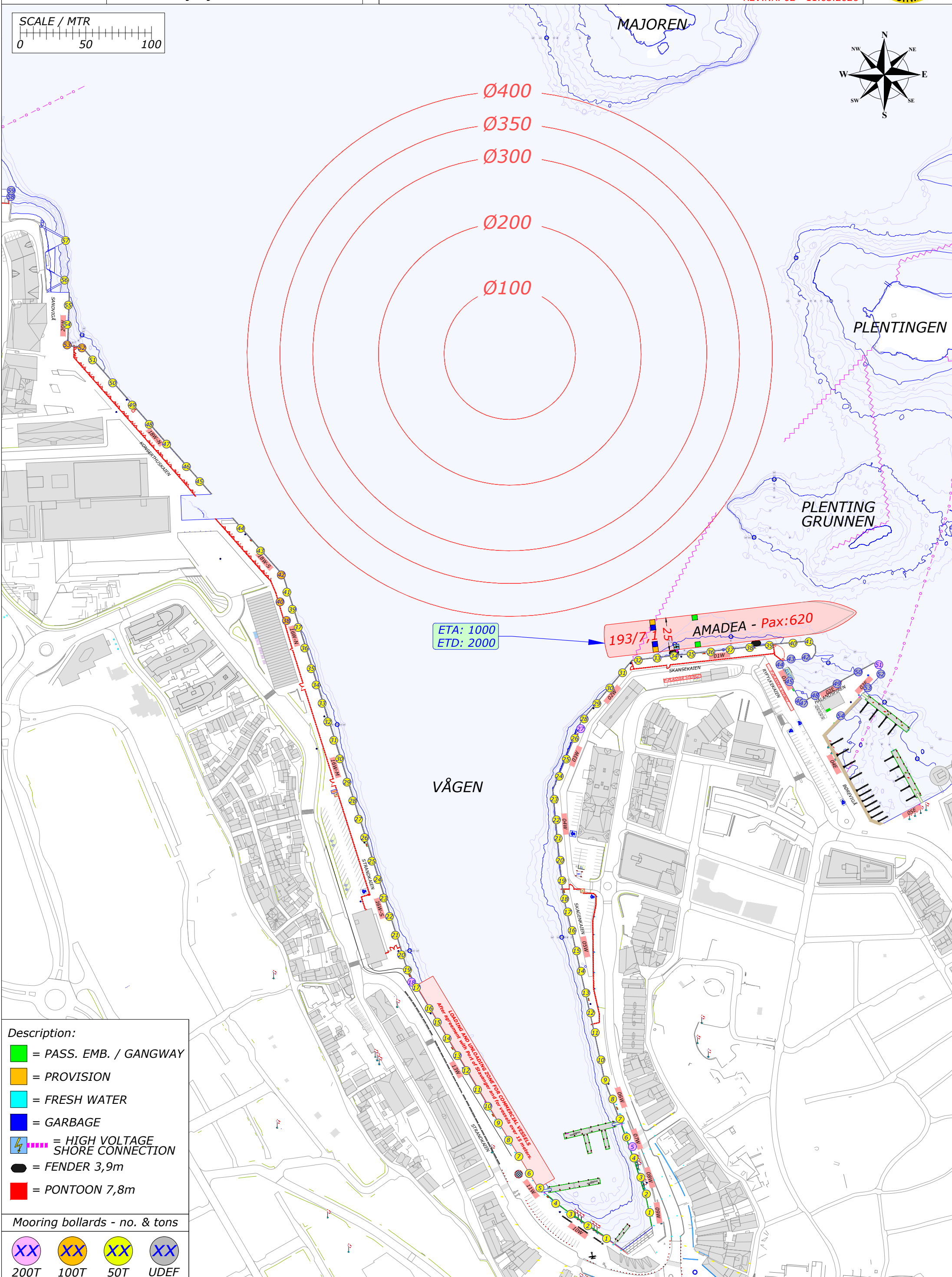
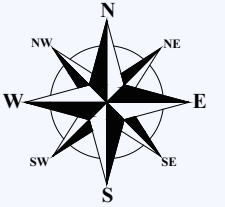
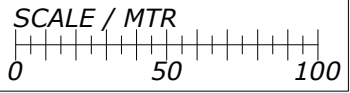
PAX-230
HANSEATIC
NATURE
139
5,8



- Description:**
- = PASS. EMB. / GANGWAY
 - = PROVISION
 - = FRESH WATER
 - = GARBAGE
 - = HIGH VOLTAGE SHORE CONNECTION
 - = FENDER 3,9m
 - = PONTOON 7,8m

Mooring bollards - no. & tons

- 200T
- 100T
- 50T
- UDEF



- Description:
- = PASS. EMB. / GANGWAY
 - = PROVISION
 - = FRESH WATER
 - = GARBAGE
 - ⚡ = HIGH VOLTAGE SHORE CONNECTION
 - = FENDER 3,9m
 - = PONTOON 7,8m

- Mooring bollards - no. & tons
- XX 200T
 - XX 100T
 - XX 50T
 - XX UDEF