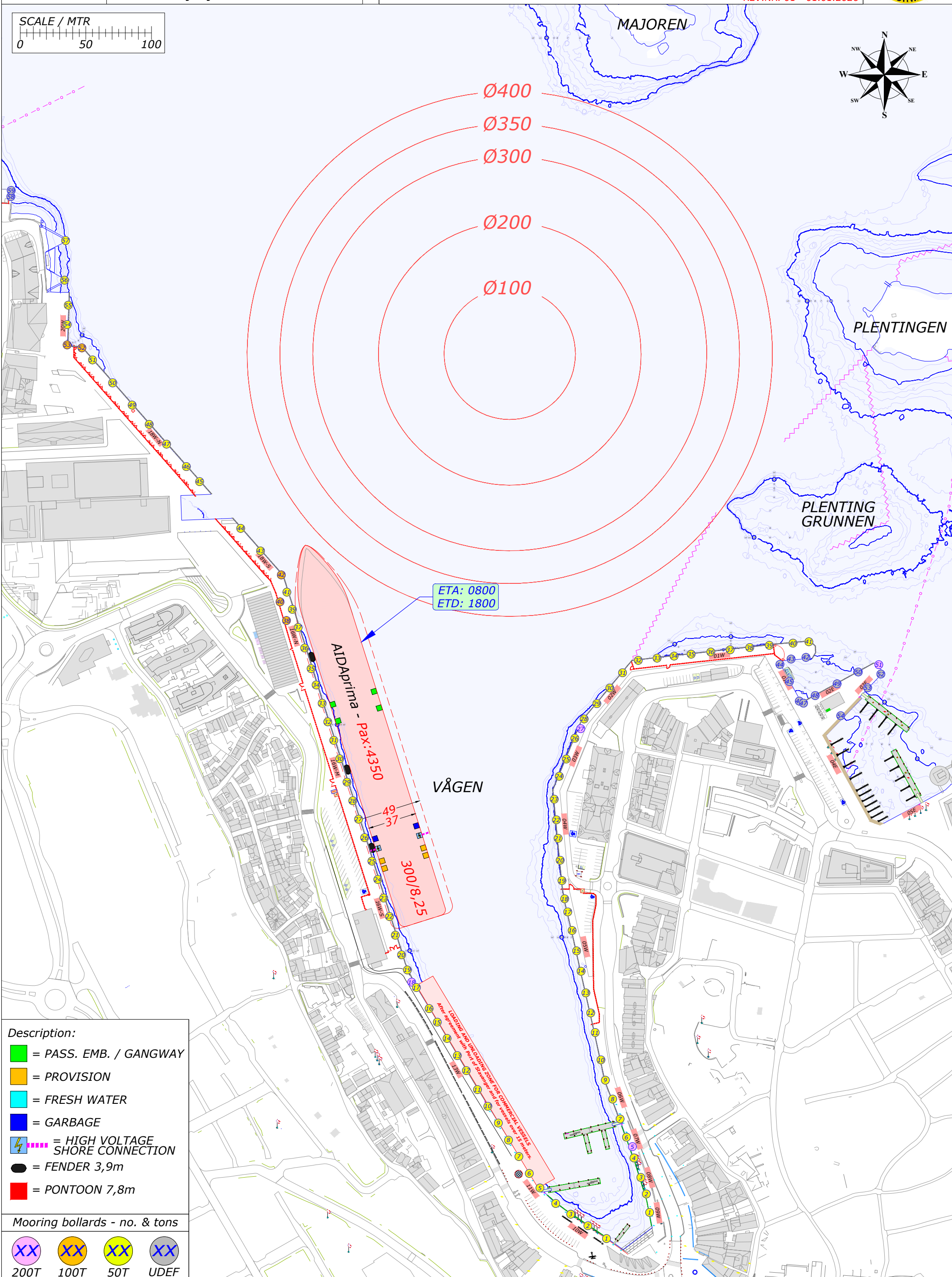
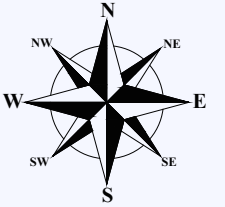
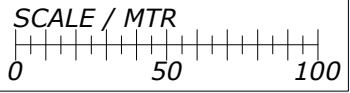


- Description:**
- = PASS. EMB. / GANGWAY
  - = PROVISION
  - = FRESH WATER
  - = GARBAGE
  - = HIGH VOLTAGE SHORE CONNECTION
  - = FENDER 3,9m
  - = PONTOON 7,8m

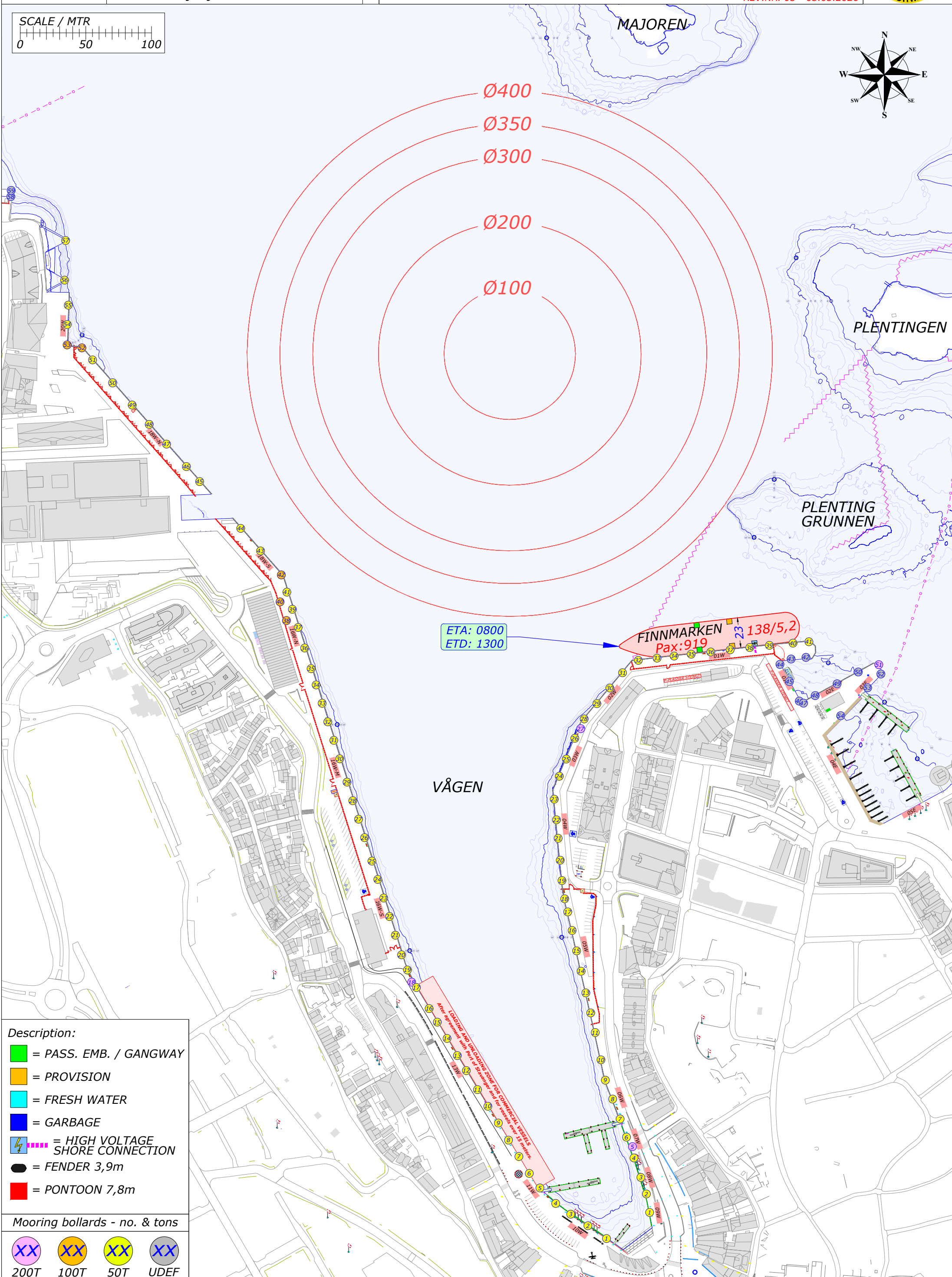
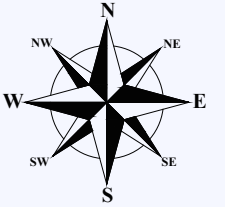
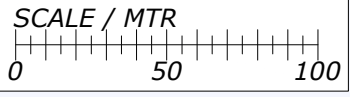
**Mooring bollards - no. & tons**

- XX 200T
- XX 100T
- XX 50T
- XX UDEF



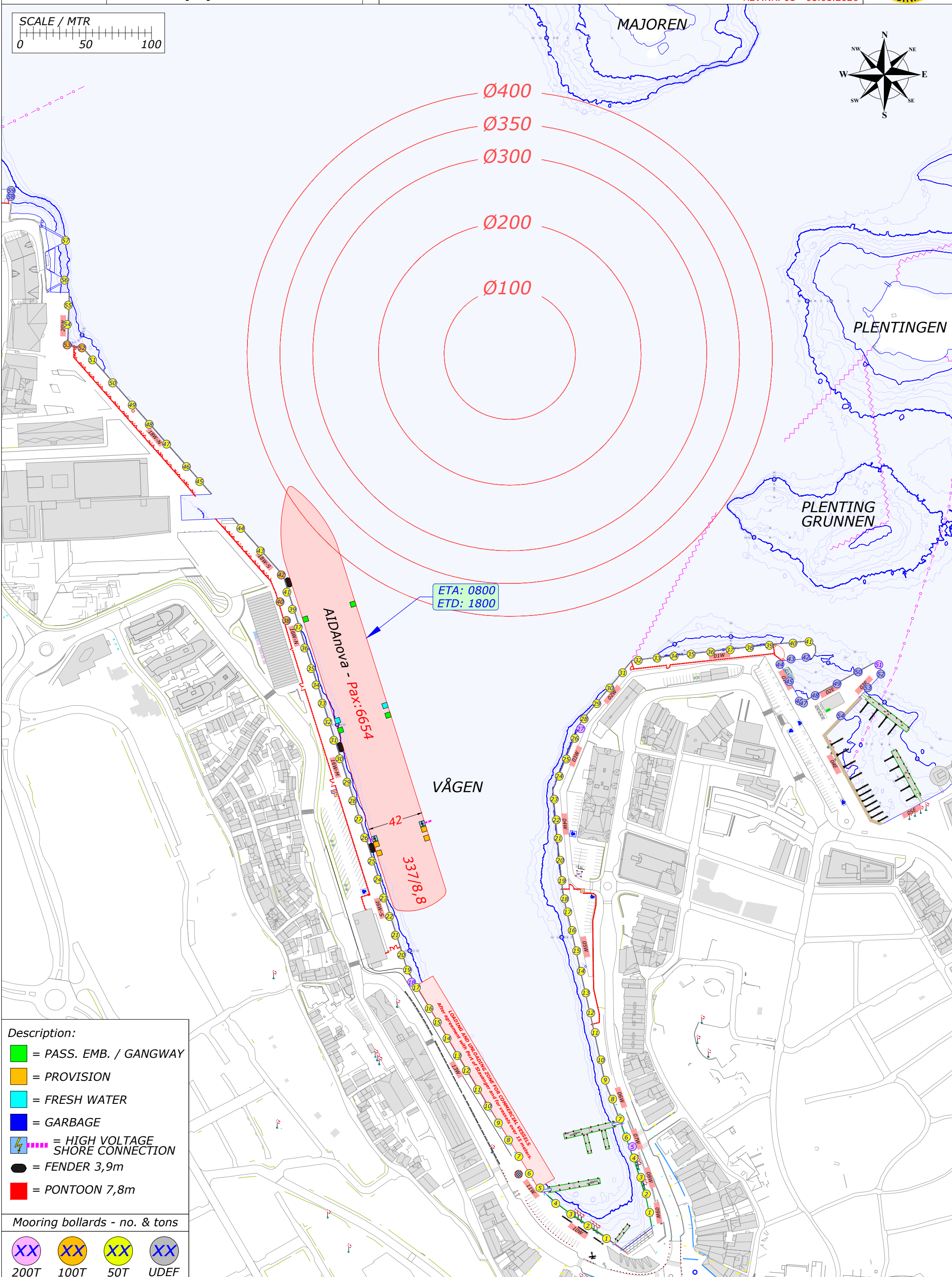
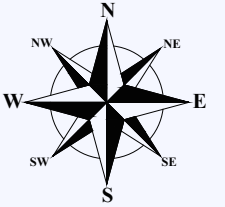
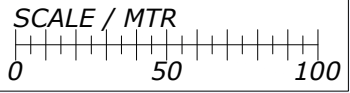
- Description:**
- = PASS. EMB. / GANGWAY
  - = PROVISION
  - = FRESH WATER
  - = GARBAGE
  - ⚡ = HIGH VOLTAGE SHORE CONNECTION
  - = FENDER 3,9m
  - = PONTOON 7,8m

- Mooring bollards - no. & tons**
- XX 200T
  - XX 100T
  - XX 50T
  - XX UDEF



- Description:**
- = PASS. EMB. / GANGWAY
  - = PROVISION
  - = FRESH WATER
  - = GARBAGE
  - = HIGH VOLTAGE SHORE CONNECTION
  - = FENDER 3,9m
  - = PONTOON 7,8m

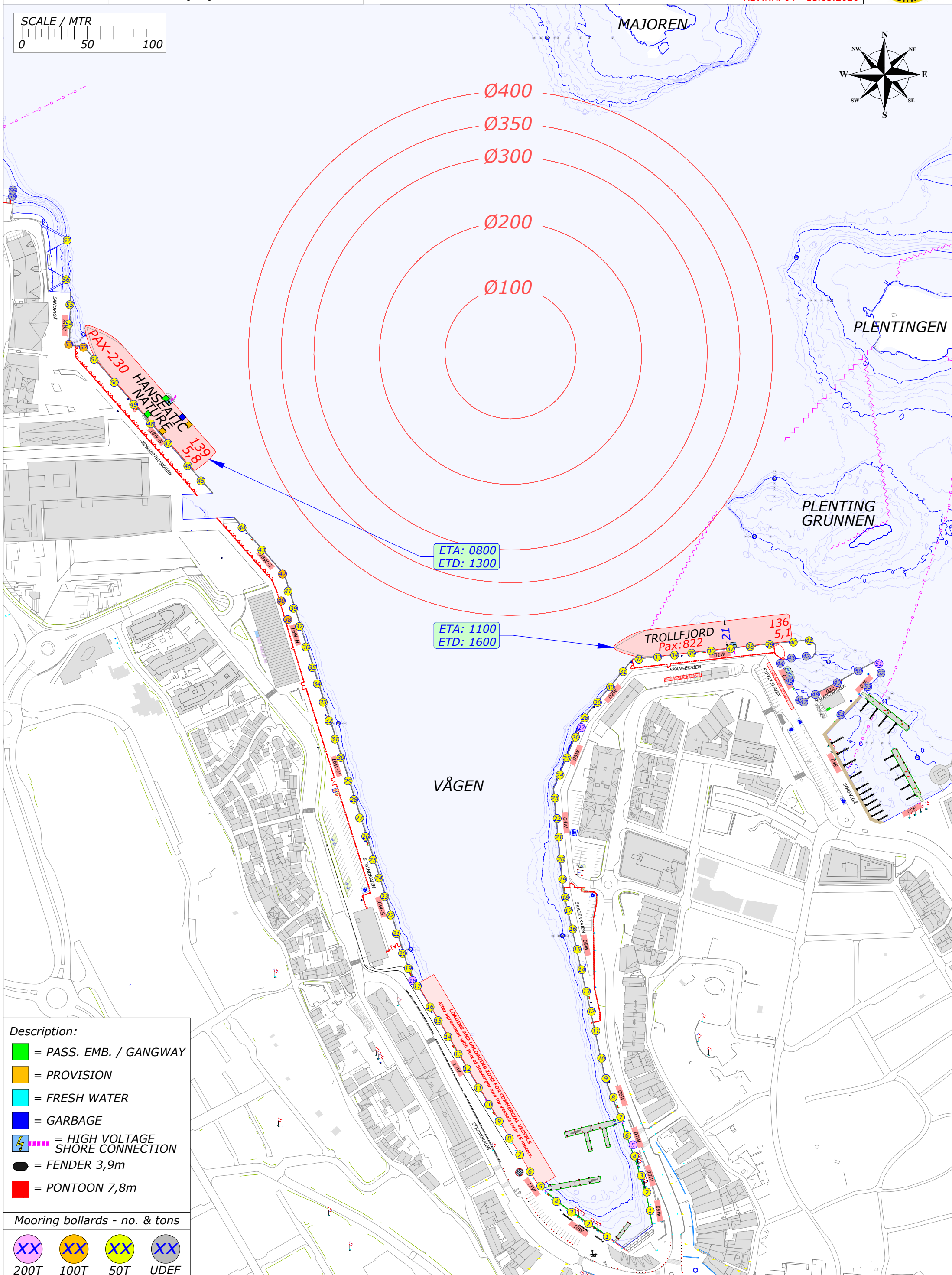
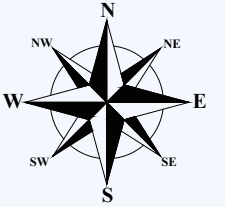
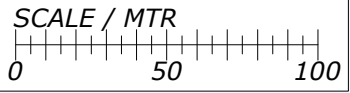
- Mooring bollards - no. & tons**
- XX 200T
  - XX 100T
  - XX 50T
  - XX UDEF



- Description:**
- = PASS. EMB. / GANGWAY
  - = PROVISION
  - = FRESH WATER
  - = GARBAGE
  - ⚡ = HIGH VOLTAGE SHORE CONNECTION
  - = FENDER 3,9m
  - = PONTOON 7,8m

Mooring bollards - no. & tons

- XX 200T
- XX 100T
- XX 50T
- XX UDEF

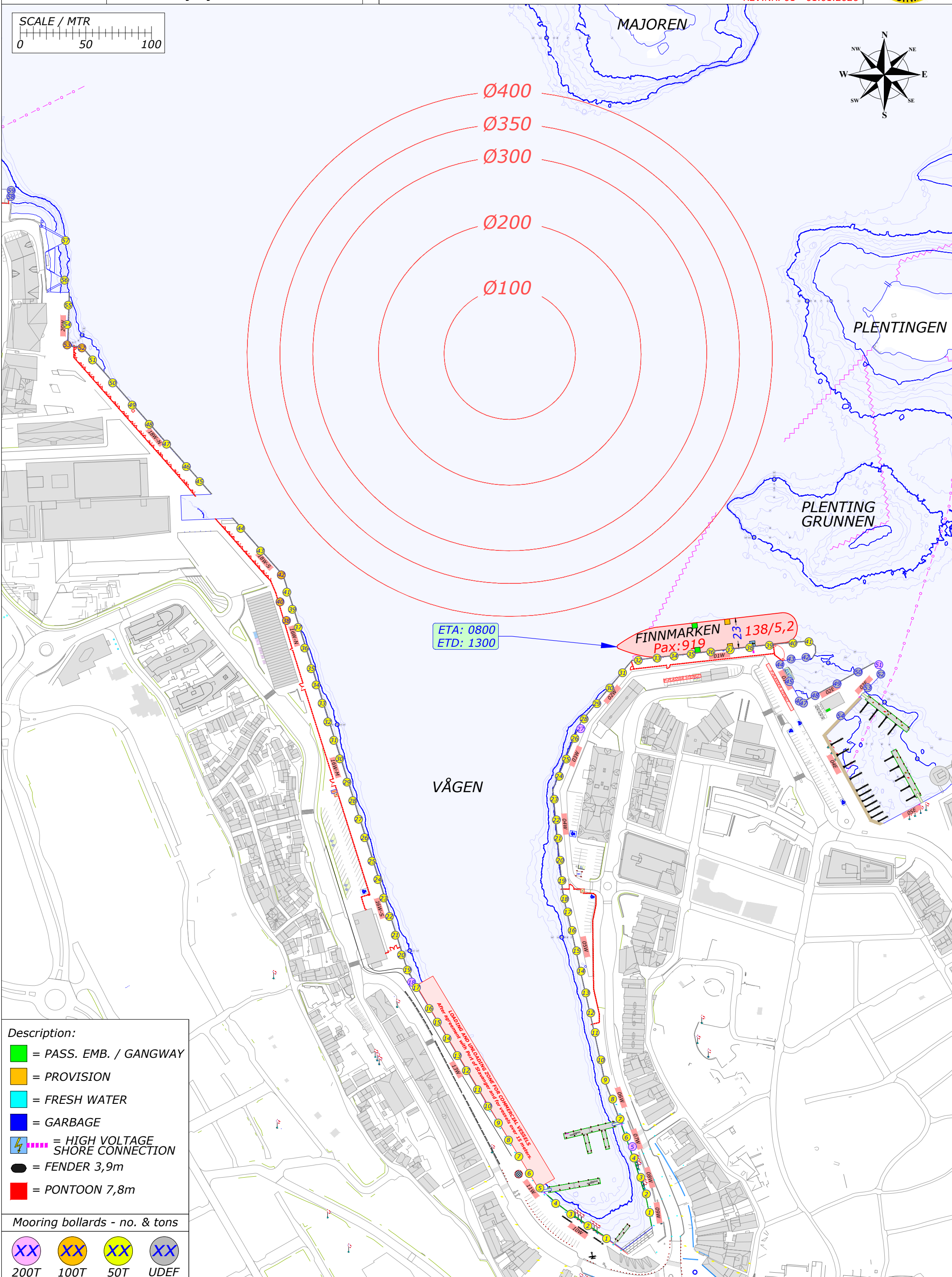
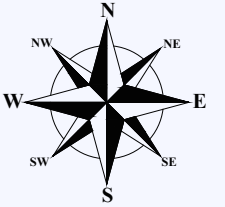
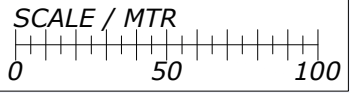


ETA: 0800  
 ETD: 1300

ETA: 1100  
 ETD: 1600

- Description:**
- = PASS. EMB. / GANGWAY
  - = PROVISION
  - = FRESH WATER
  - = GARBAGE
  - = HIGH VOLTAGE SHORE CONNECTION
  - = FENDER 3,9m
  - = PONTOON 7,8m

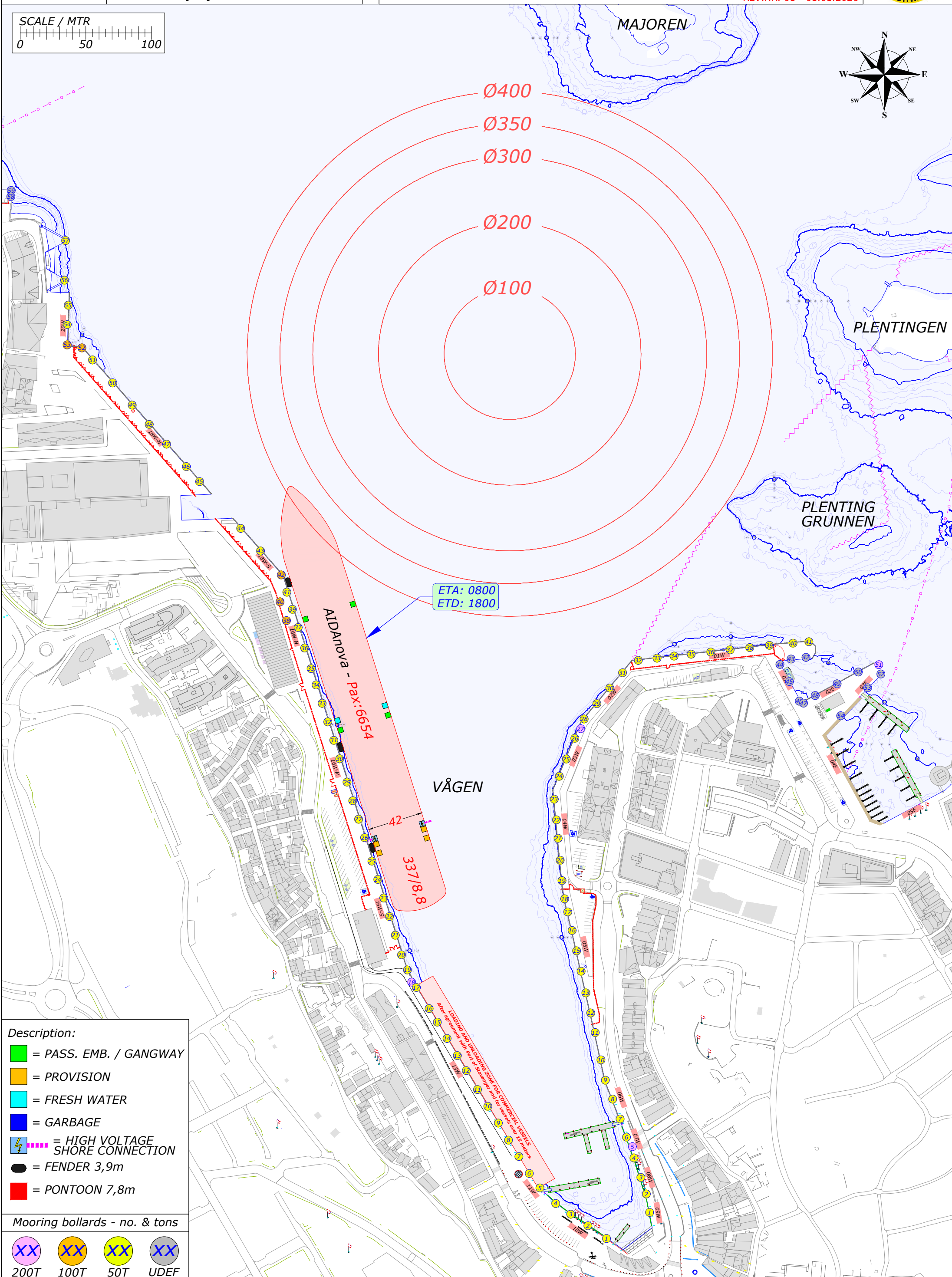
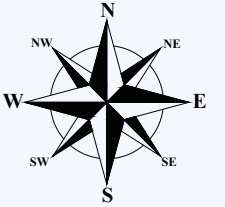
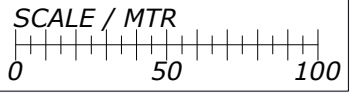
- Mooring bollards - no. & tons**
- XX 200T
  - XX 100T
  - XX 50T
  - XX UDEF



- Description:**
- = PASS. EMB. / GANGWAY
  - = PROVISION
  - = FRESH WATER
  - = GARBAGE
  - = HIGH VOLTAGE SHORE CONNECTION
  - = FENDER 3,9m
  - = PONTOON 7,8m

**Mooring bollards - no. & tons**

- 200T
- 100T
- 50T
- UDEF



ETA: 0800  
ETD: 1800

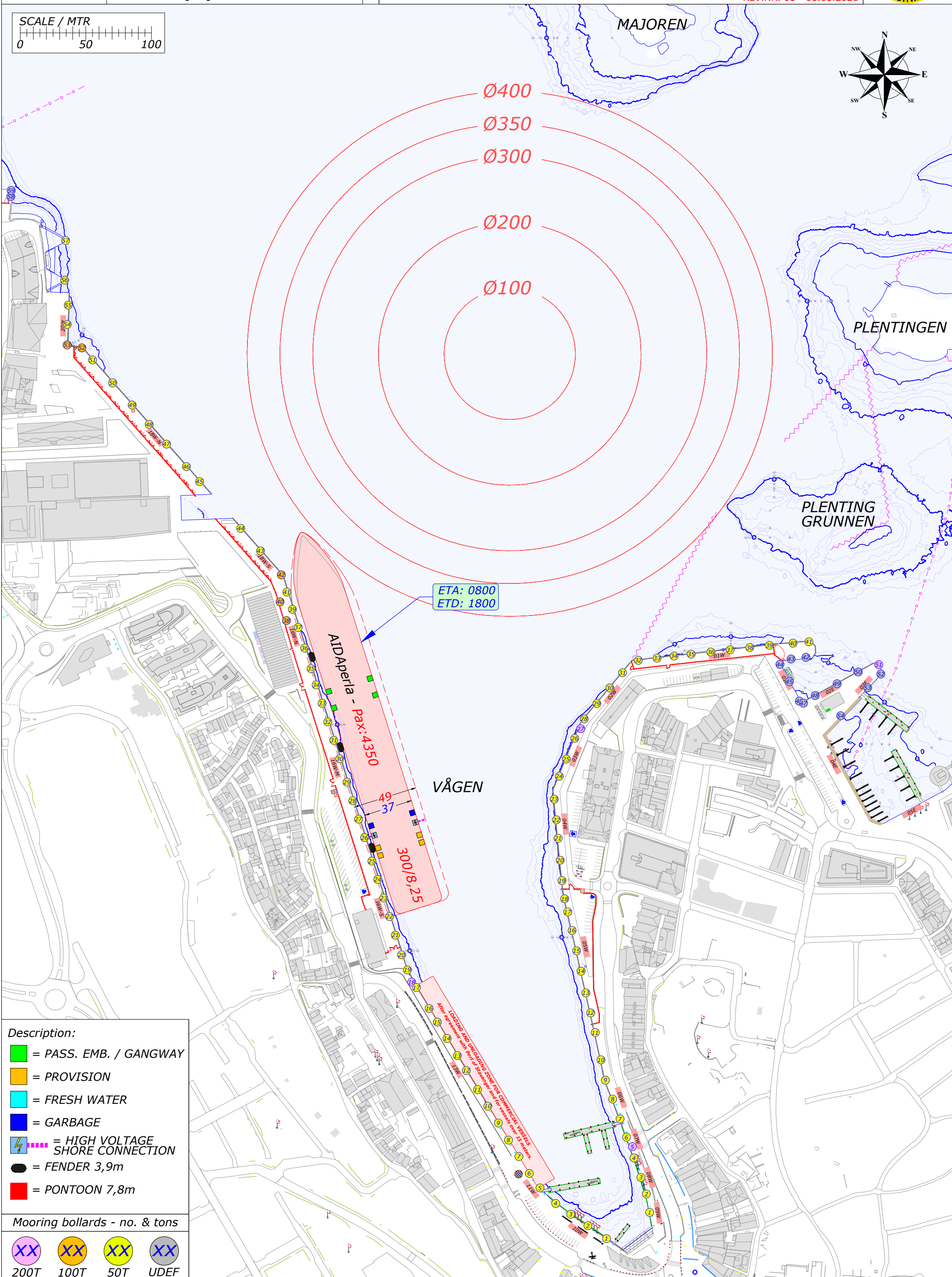
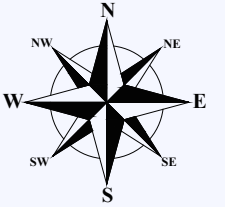
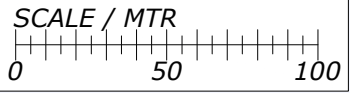
AIDANOVA - Pax: 6654

VÅGEN

42  
337/8,8

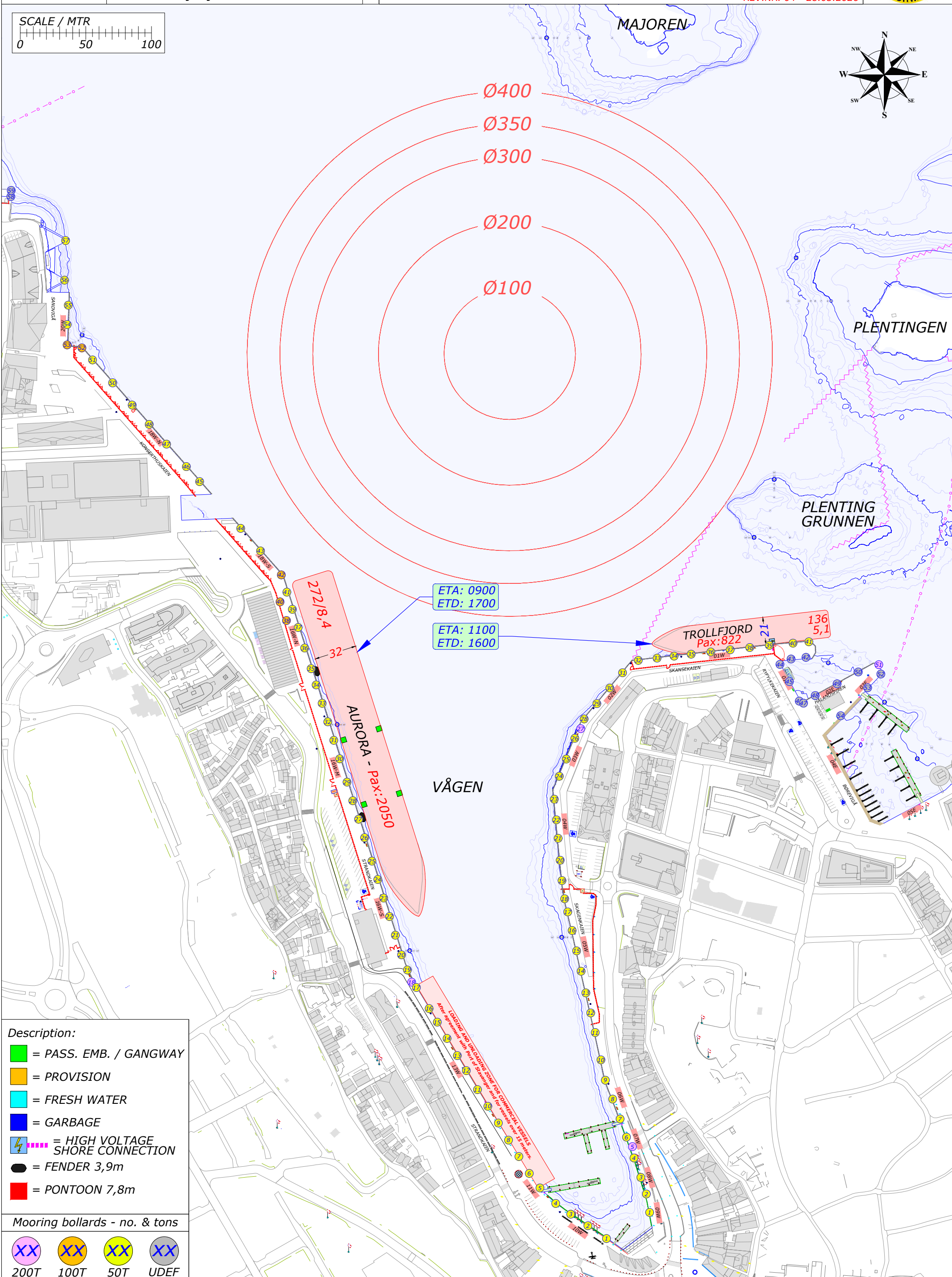
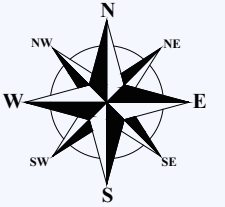
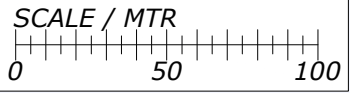
- Description:
- = PASS. EMB. / GANGWAY
  - = PROVISION
  - = FRESH WATER
  - = GARBAGE
  - = HIGH VOLTAGE SHORE CONNECTION
  - = FENDER 3,9m
  - = PONTOON 7,8m

- Mooring bollards - no. & tons
- 200T
  - 100T
  - 50T
  - UDEF



- Description:**
- = PASS. EMB. / GANGWAY
  - = PROVISION
  - = FRESH WATER
  - = GARBAGE
  - ⚡ = HIGH VOLTAGE SHORE CONNECTION
  - = FENDER 3,9m
  - = PONTOON 7,8m

- Mooring bollards - no. & tons**
- XX 200T
  - XX 100T
  - XX 50T
  - XX UDEF



ETA: 0900  
 ETD: 1700

ETA: 1100  
 ETD: 1600

272/8,4  
 32

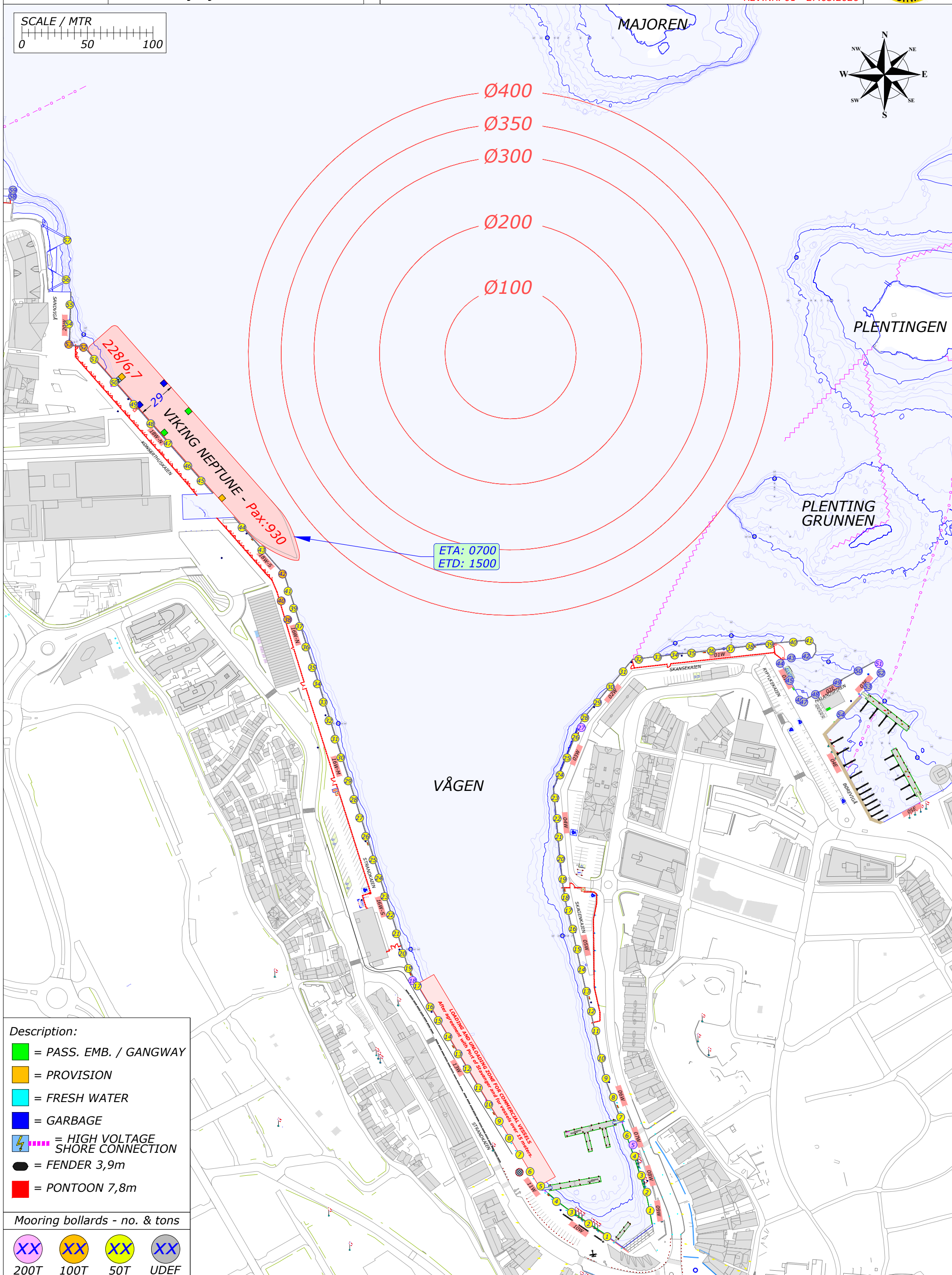
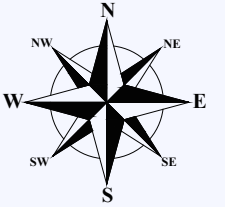
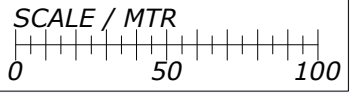
TROLLFIORD  
 Pax: 822  
 136  
 5,1

AURORA - Pax: 2050

VÅGEN

- Description:**
- = PASS. EMB. / GANGWAY
  - = PROVISION
  - = FRESH WATER
  - = GARBAGE
  - ⚡ = HIGH VOLTAGE SHORE CONNECTION
  - = FENDER 3,9m
  - = PONTOON 7,8m

- Mooring bollards - no. & tons**
- XX 200T
  - XX 100T
  - XX 50T
  - XX UDEF



- Description:**
- = PASS. EMB. / GANGWAY
  - = PROVISION
  - = FRESH WATER
  - = GARBAGE
  - ⚡ = HIGH VOLTAGE SHORE CONNECTION
  - = FENDER 3,9m
  - = PONTOON 7,8m

- Mooring bollards - no. & tons**
- XX 200T
  - XX 100T
  - XX 50T
  - XX UDEF