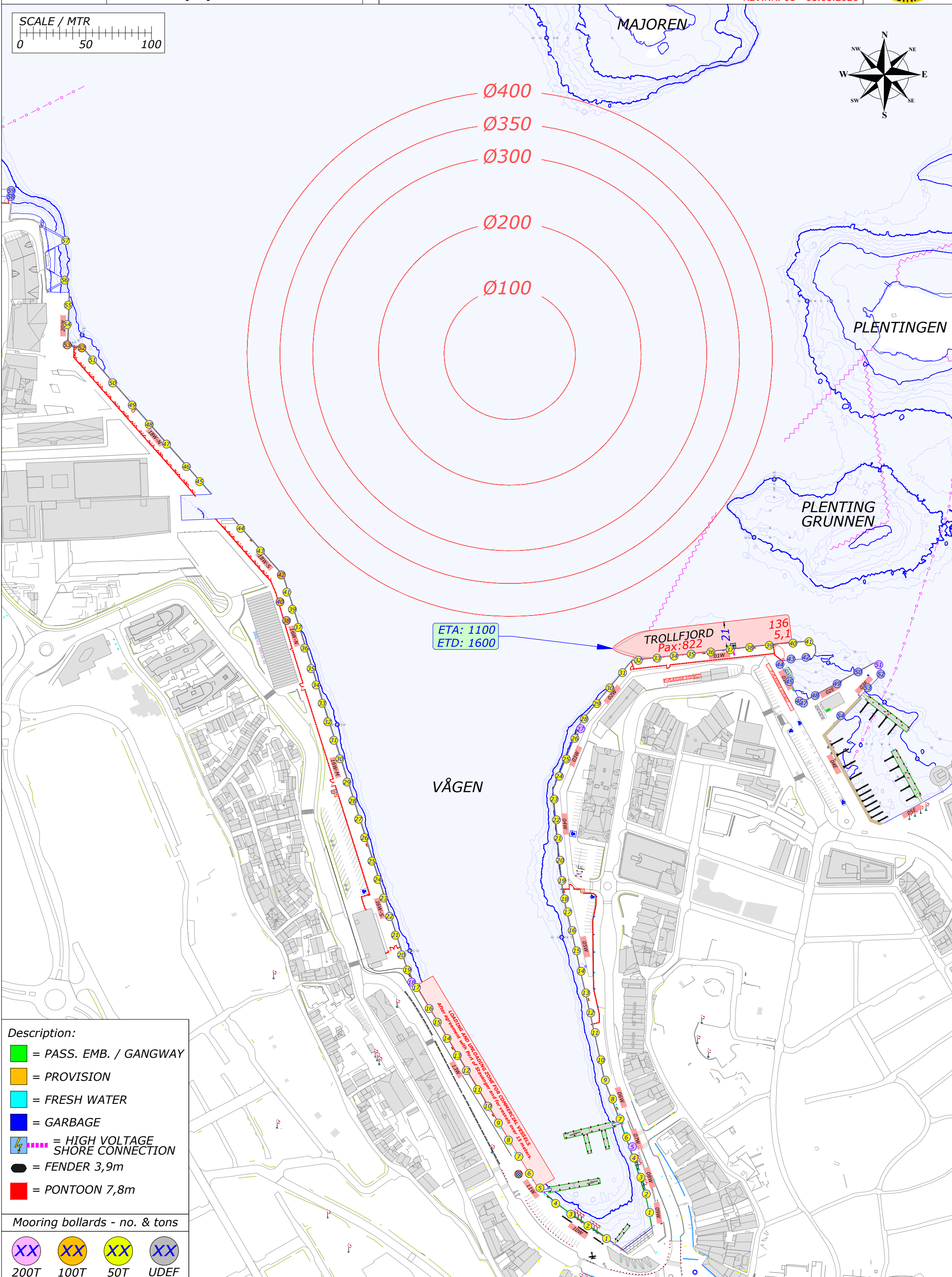
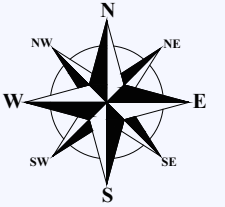
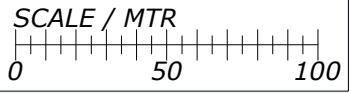


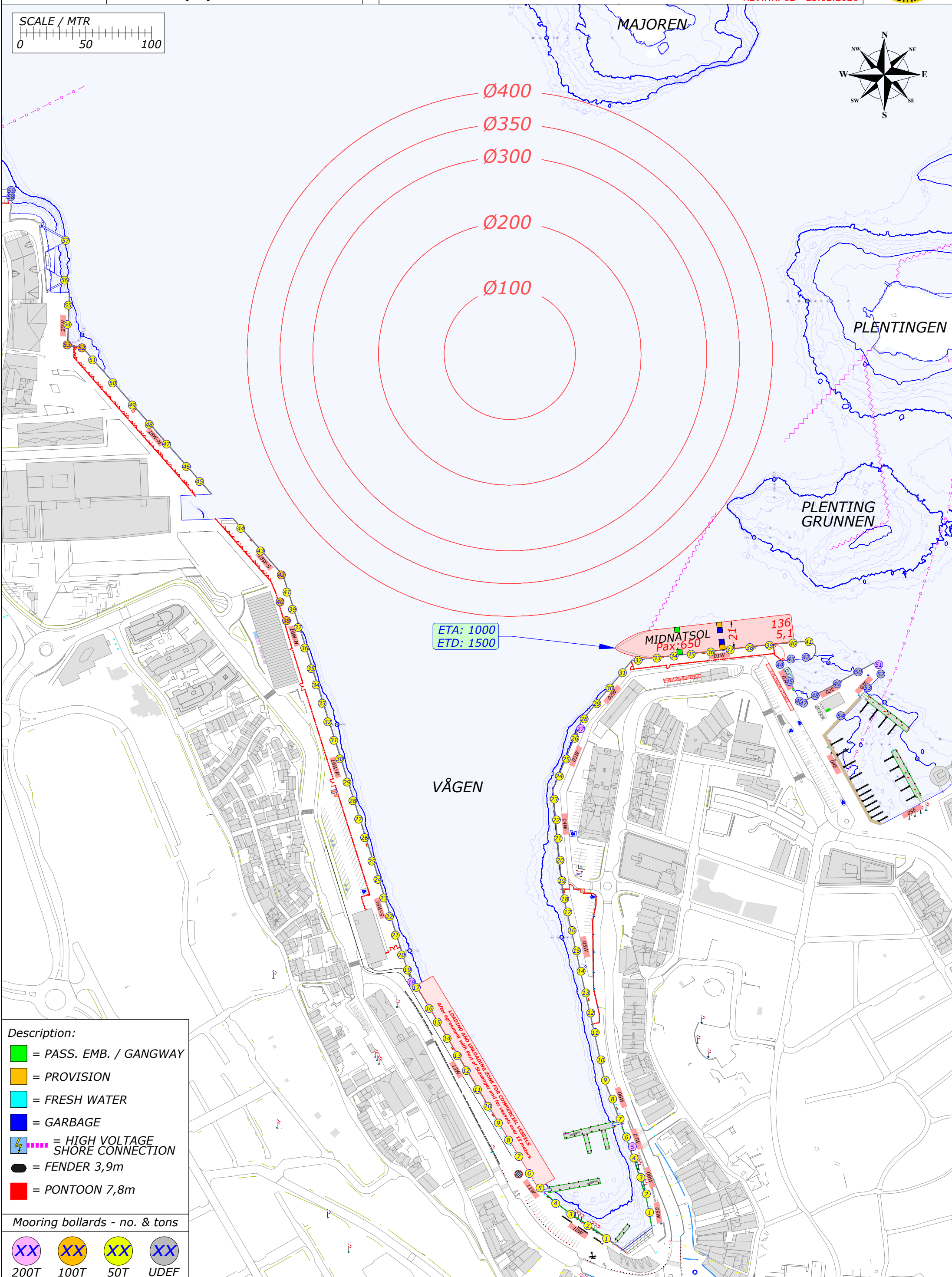
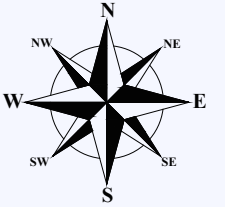
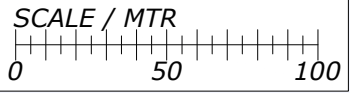
- Description:**
- = PASS. EMB. / GANGWAY
 - = PROVISION
 - = FRESH WATER
 - = GARBAGE
 - ⚡ = HIGH VOLTAGE SHORE CONNECTION
 - = FENDER 3,9m
 - = PONTOON 7,8m

- Mooring bollards - no. & tons**
- XX 200T
 - XX 100T
 - XX 50T
 - XX UDEF



- Description:**
- = PASS. EMB. / GANGWAY
 - = PROVISION
 - = FRESH WATER
 - = GARBAGE
 - = HIGH VOLTAGE SHORE CONNECTION
 - = FENDER 3,9m
 - = PONTOON 7,8m

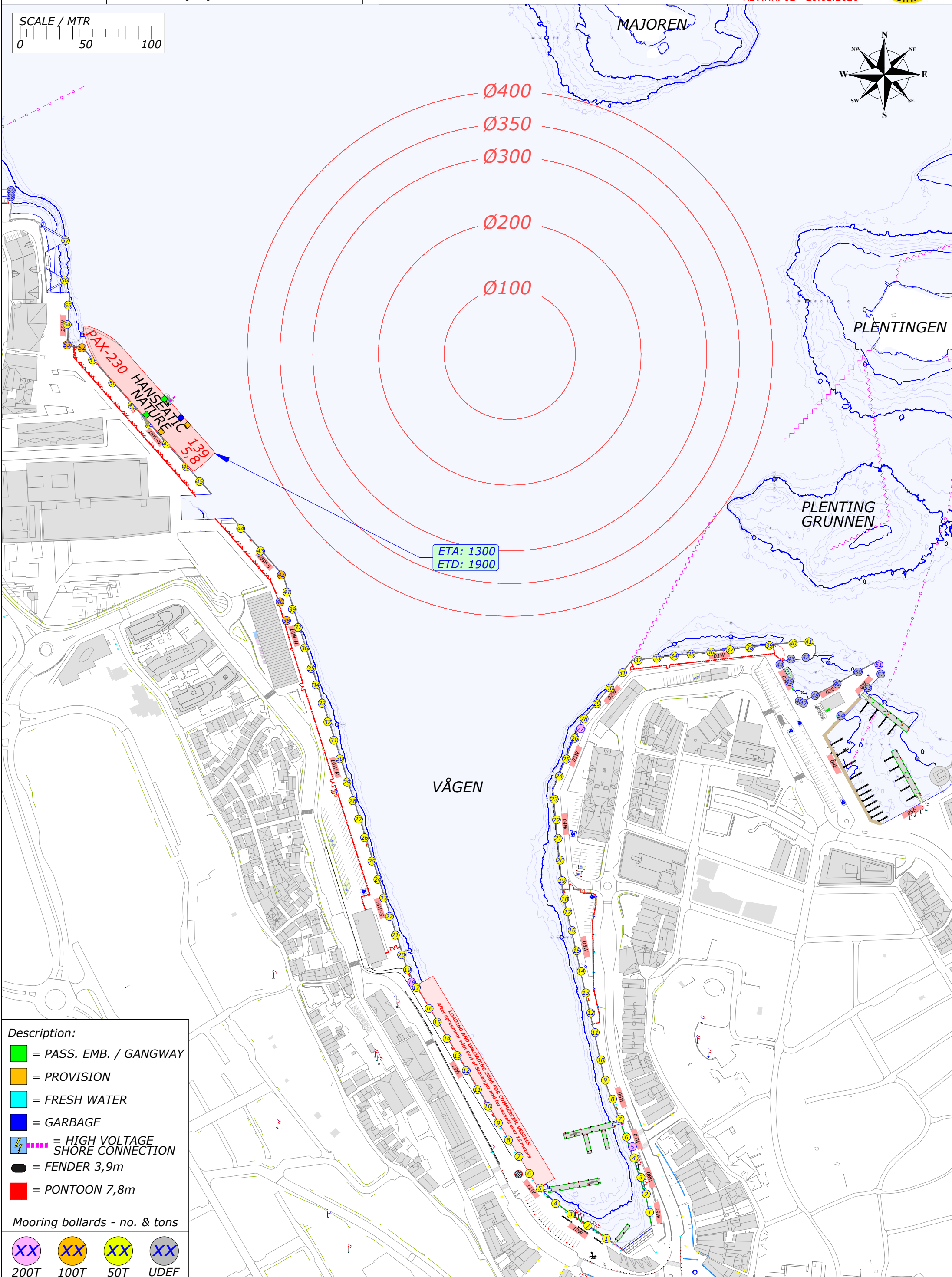
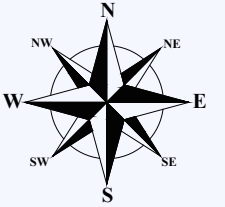
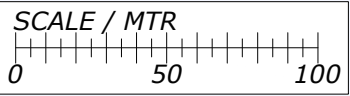
- Mooring bollards - no. & tons**
- XX 200T
 - XX 100T
 - XX 50T
 - XX UDEF



- Description:**
- = PASS. EMB. / GANGWAY
 - = PROVISION
 - = FRESH WATER
 - = GARBAGE
 - = HIGH VOLTAGE SHORE CONNECTION
 - = FENDER 3,9m
 - = PONTOON 7,8m

Mooring bollards - no. & tons

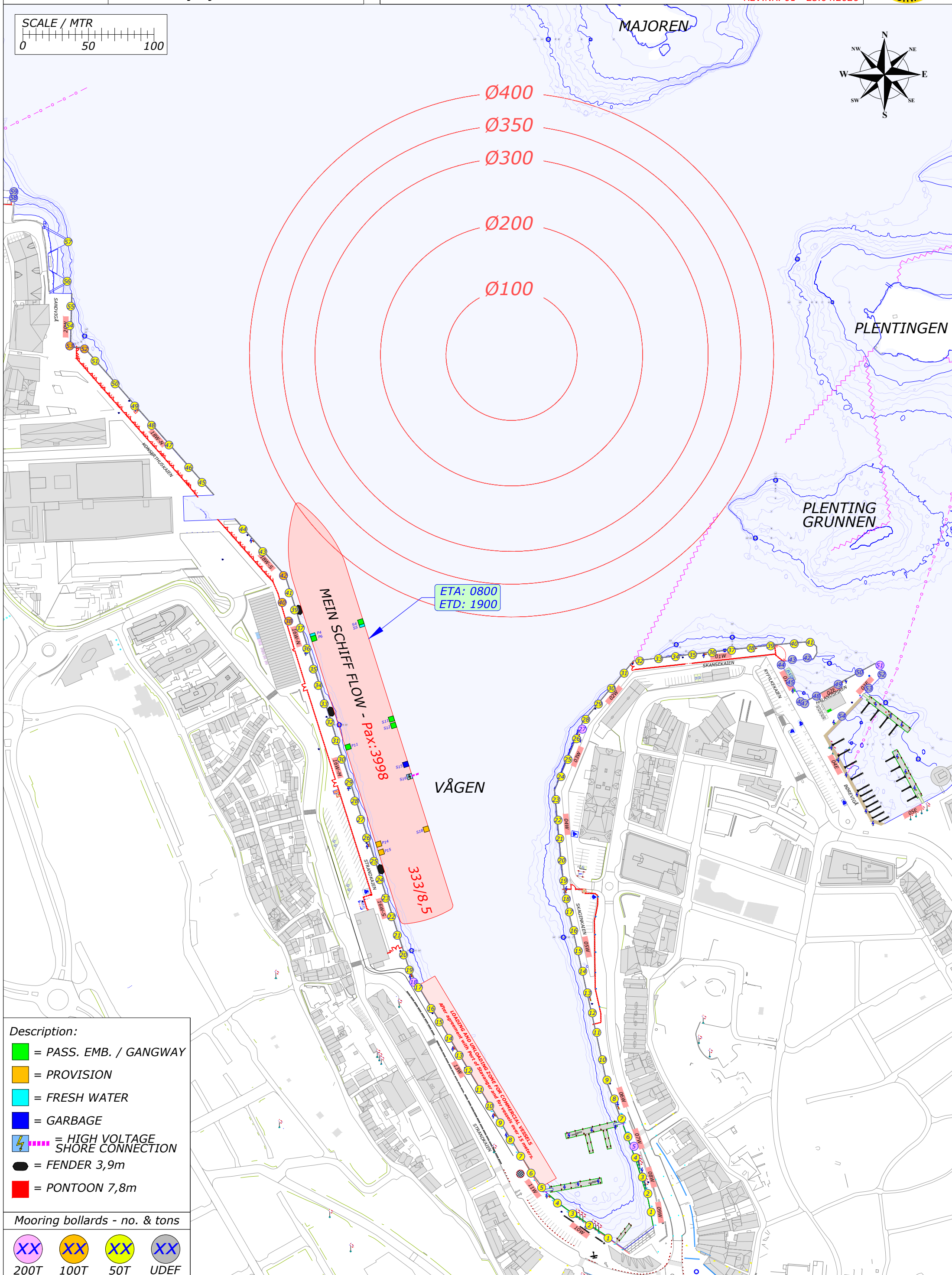
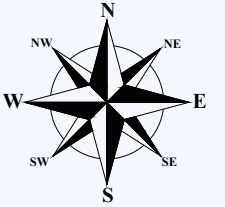
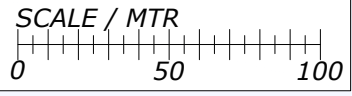
- XX 200T
- XX 100T
- XX 50T
- XX UDEF



- Description:**
- = PASS. EMB. / GANGWAY
 - = PROVISION
 - = FRESH WATER
 - = GARBAGE
 - = HIGH VOLTAGE SHORE CONNECTION
 - = FENDER 3,9m
 - = PONTOON 7,8m

Mooring bollards - no. & tons

- 200T
- 100T
- 50T
- UDEF

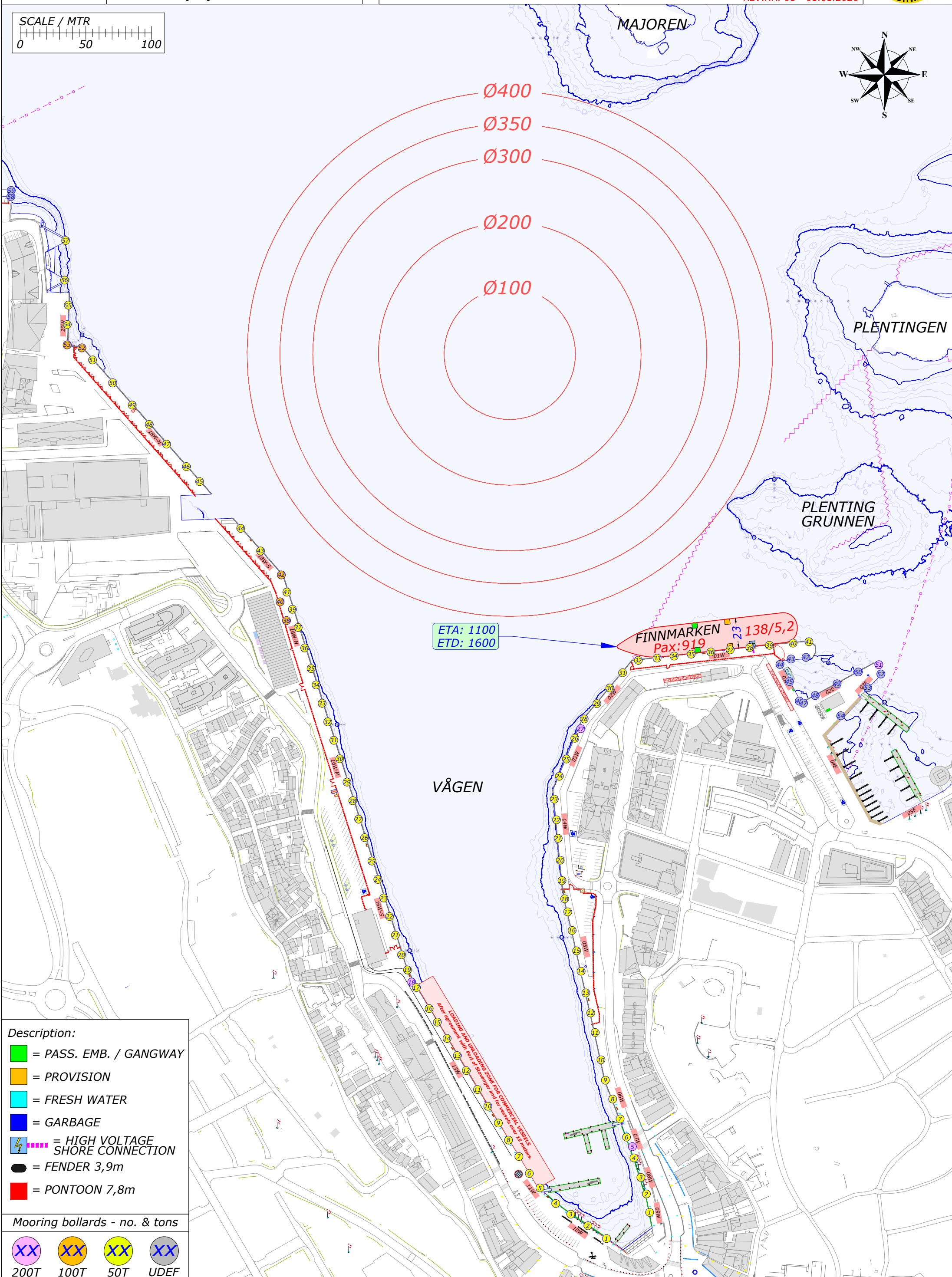
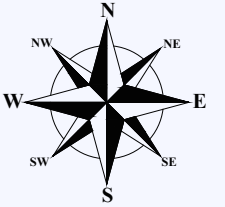
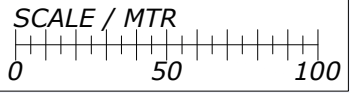


ETA: 0800
 ETD: 1900

- Description:**
- = PASS. EMB. / GANGWAY
 - = PROVISION
 - = FRESH WATER
 - = GARBAGE
 - ⚡ = HIGH VOLTAGE SHORE CONNECTION
 - = FENDER 3,9m
 - = PONTOON 7,8m

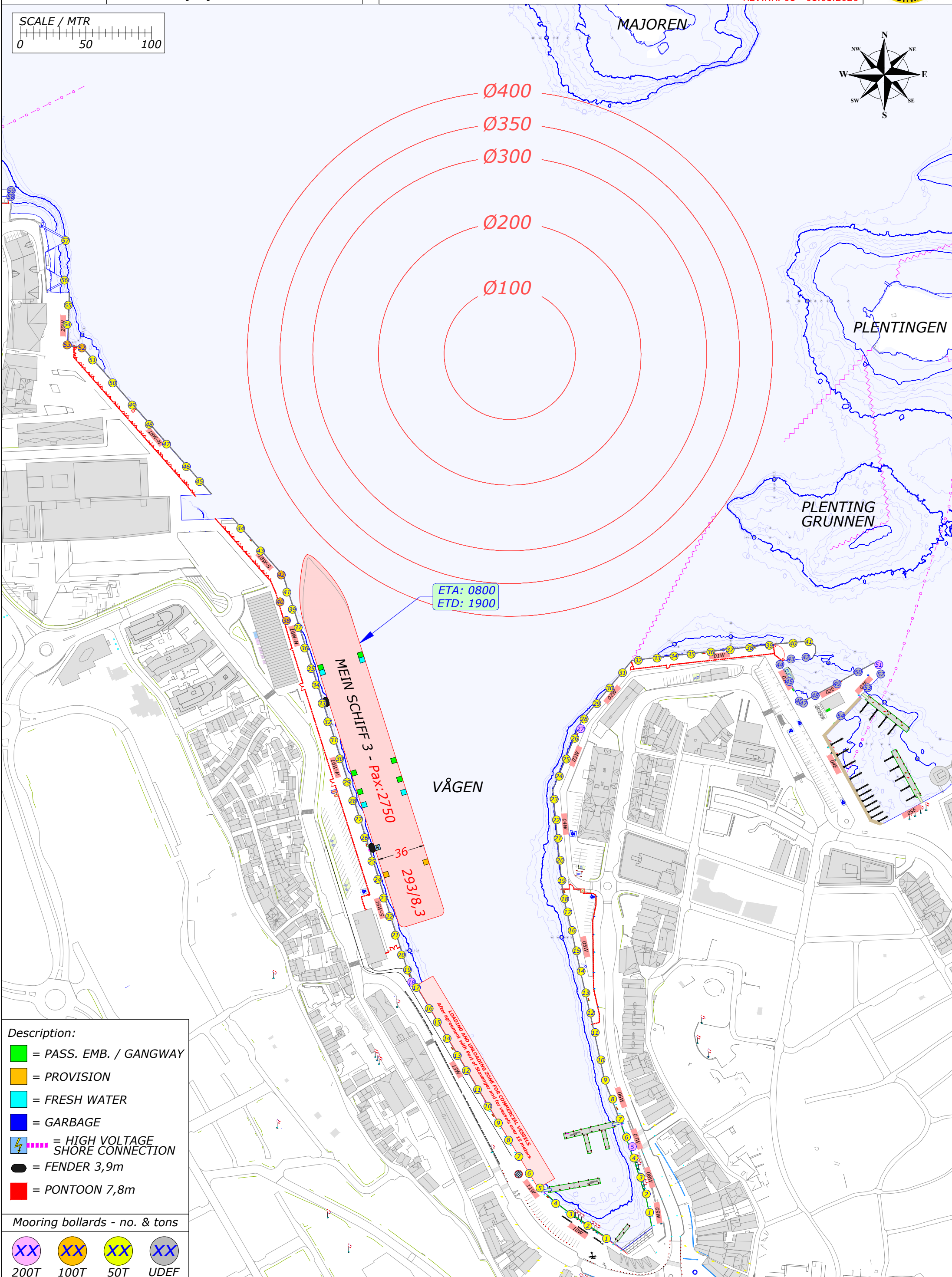
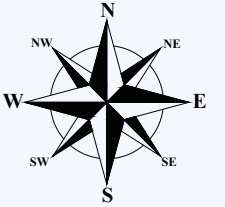
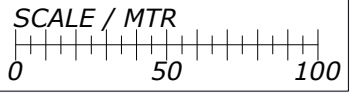
Mooring bollards - no. & tons

- XX 200T
- XX 100T
- XX 50T
- XX UDEF



- Description:**
- = PASS. EMB. / GANGWAY
 - = PROVISION
 - = FRESH WATER
 - = GARBAGE
 - ⚡ = HIGH VOLTAGE SHORE CONNECTION
 - = FENDER 3,9m
 - = PONTOON 7,8m

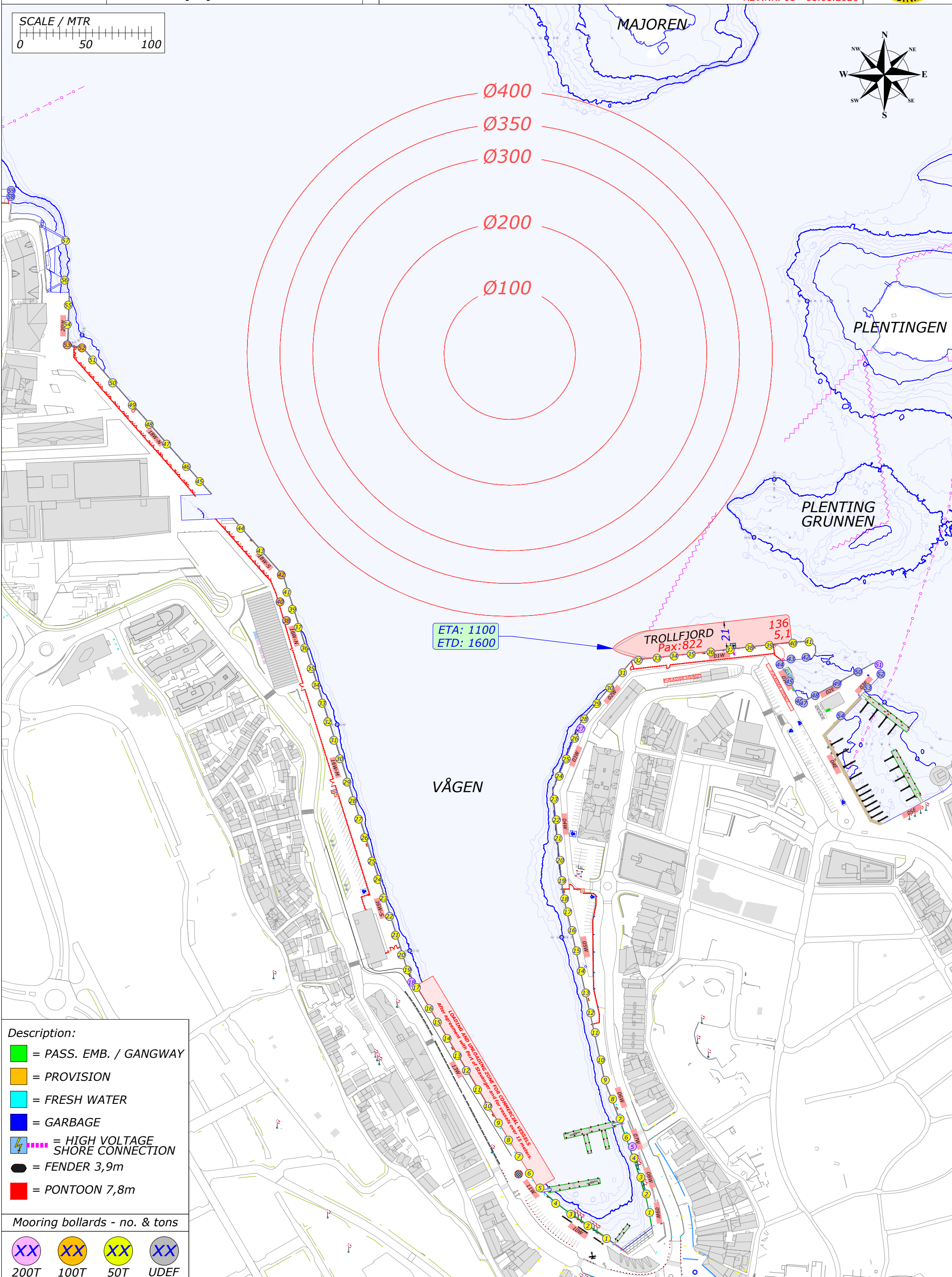
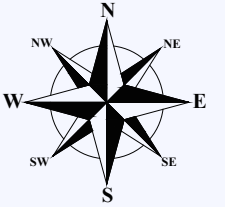
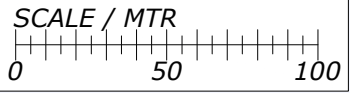
- Mooring bollards - no. & tons**
- XX 200T
 - XX 100T
 - XX 50T
 - XX UDEF



- Description:**
- = PASS. EMB. / GANGWAY
 - = PROVISION
 - = FRESH WATER
 - = GARBAGE
 - ⚡ = HIGH VOLTAGE SHORE CONNECTION
 - = FENDER 3,9m
 - = PONTOON 7,8m

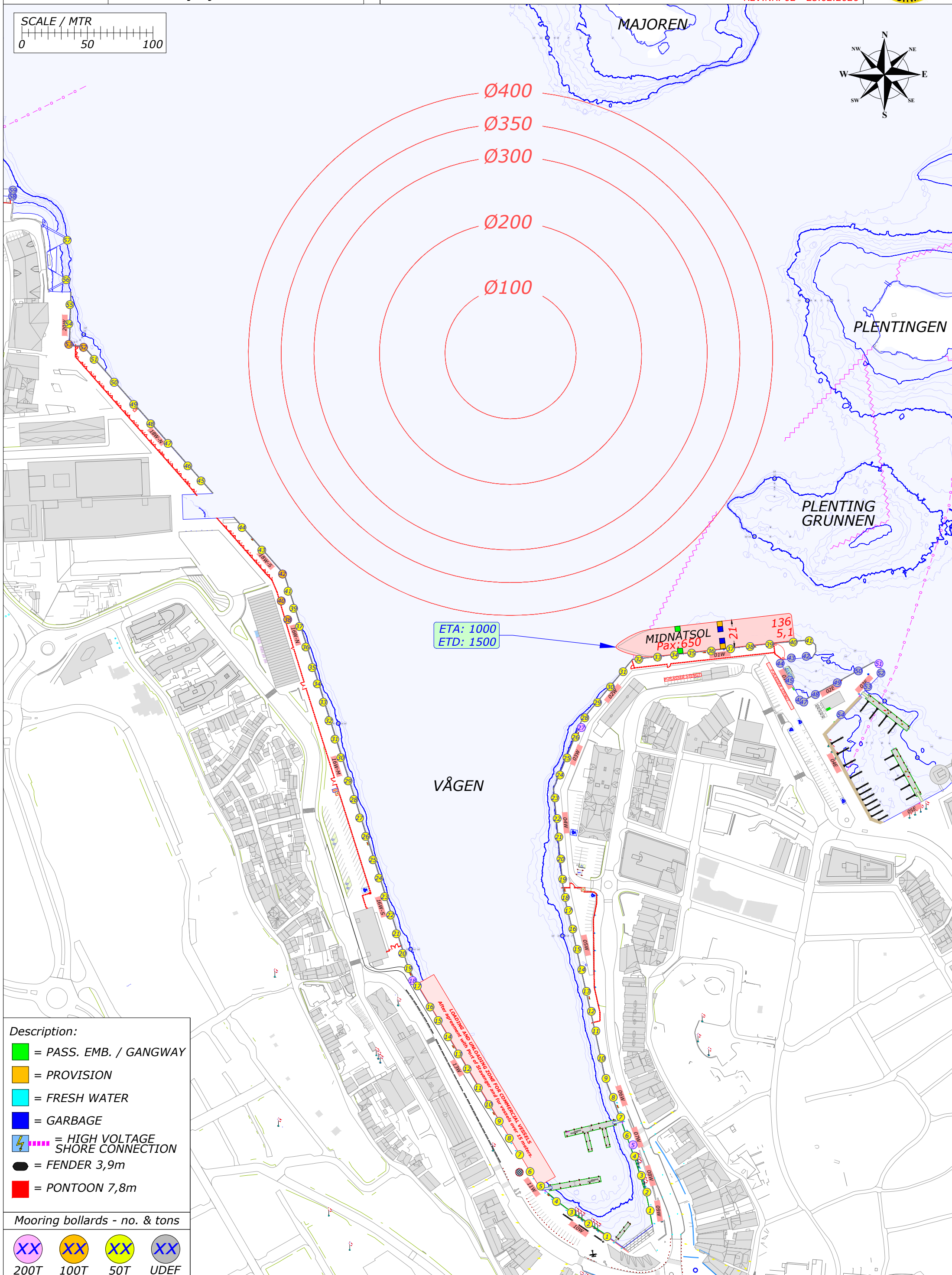
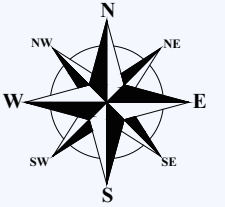
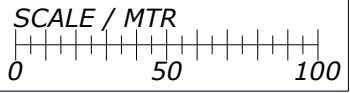
Mooring bollards - no. & tons

- XX 200T
- XX 100T
- XX 50T
- XX UDEF



- Description:**
- = PASS. EMB. / GANGWAY
 - = PROVISION
 - = FRESH WATER
 - = GARBAGE
 - ⚡ = HIGH VOLTAGE SHORE CONNECTION
 - = FENDER 3,9m
 - = PONTOON 7,8m

- Mooring bollards - no. & tons**
- XX 200T
 - XX 100T
 - XX 50T
 - XX UDEF

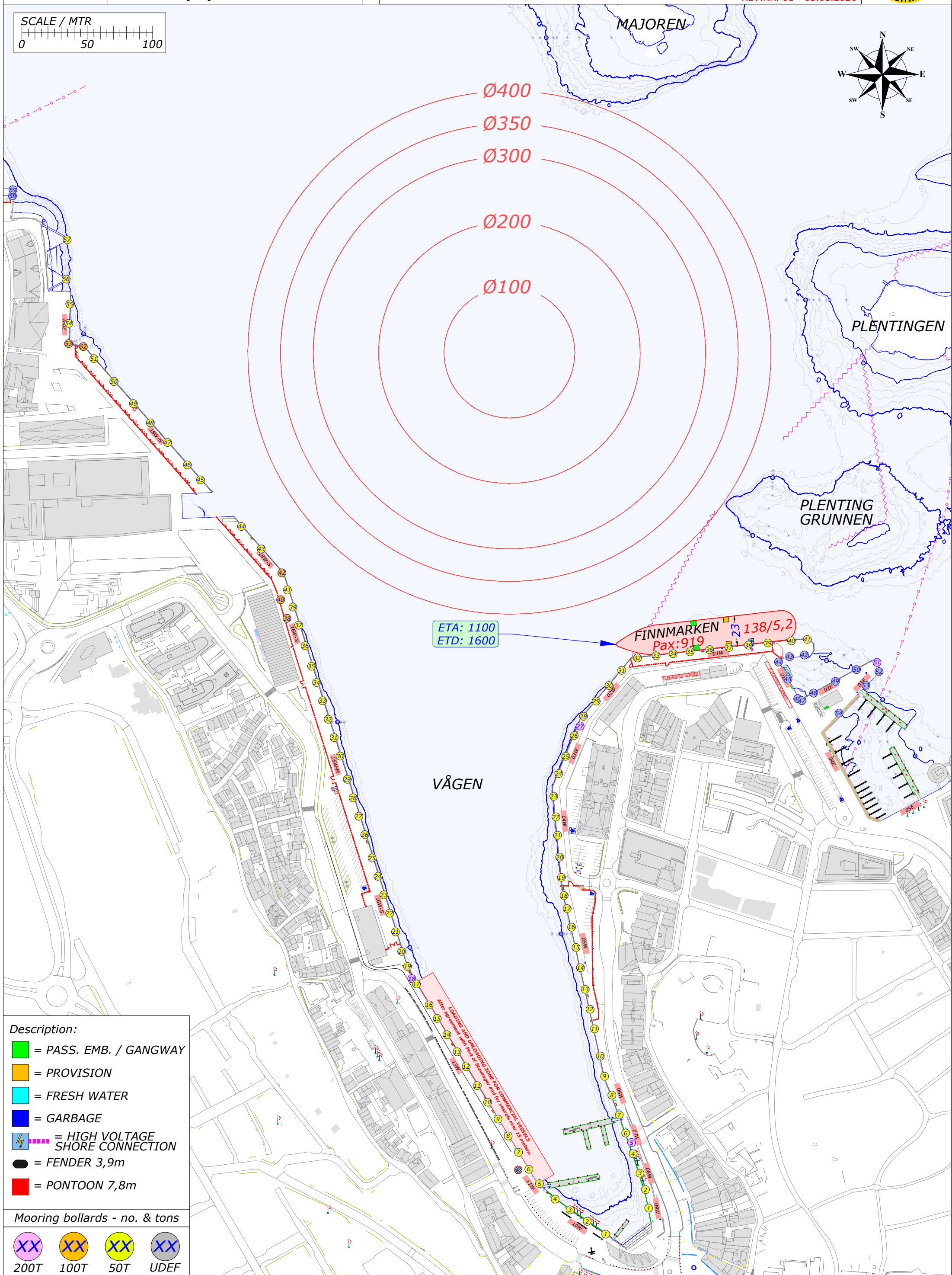
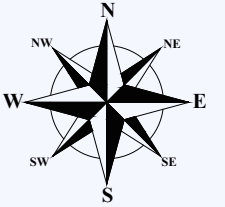
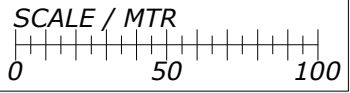


ETA: 1000
ETD: 1500

MIDNATSOL
Pax: 650
136
5,1

- Description:**
- = PASS. EMB. / GANGWAY
 - = PROVISION
 - = FRESH WATER
 - = GARBAGE
 - = HIGH VOLTAGE SHORE CONNECTION
 - = FENDER 3,9m
 - = PONTOON 7,8m

- Mooring bollards - no. & tons**
- XX 200T
 - XX 100T
 - XX 50T
 - XX UDEF



ETA: 1100
ETD: 1600

FINNMARKEN
Pax: 919
138/5,2

- Description:**
- = PASS. EMB. / GANGWAY
 - = PROVISION
 - = FRESH WATER
 - = GARBAGE
 - = HIGH VOLTAGE SHORE CONNECTION
 - = FENDER 3,9m
 - = PONTOON 7,8m

- Mooring bollards - no. & tons**
- XX 200T
 - XX 100T
 - XX 50T
 - XX UDEF